



SWAROVSKI

CREATE  
YOUR STYLE

2015

TRENDS INSPIRATIONS  
& PROJECT DESIGNS

## 2015 TRENDS, INSPIRATIONS & PROJECT DESIGNS

Swarovski is the premium brand for the finest crystal elements. For 120 years, the company has been recognized for its pioneering spirit, its collaborations with designers, and its responsible behavior. In its continuous effort to strive for excellence and the highest standards of customer service, Swarovski has created a comprehensive product and service offering that delivers distinctive values to its customers.

Every year Swarovski presents a groundbreaking range of new crystal cuts, colors, effects, and line extensions. Sought after by the world's top brands and designers in fashion, accessories, jewelry, interiors, lighting, and packaging, these crystal innovations demonstrate our world-leading inventiveness, first-class quality and creativity.

We are pleased to share our trends with you for Spring & Summer 2015 and Fall & Winter 2015/2016 along with design projects that you can create or reinterpret in your own style to be on trend with each new season!

<b>Spring/Summer 2015 Trends – Traces of Time.....</b>	<b>4</b>
• Classic Trend – FADED MEMORIES.....	5
• Romantic Trend – SUNSET RITUALS.....	12
• Progressive Trend – VIVID MOMENTS.....	19
• Glamour Trend – FORGOTTEN DREAMS.....	24
<b>Pre-Season Fall/Winter 2015/2016 Trends.....</b>	<b>32</b>
• NOSTALGIC GRANDEUR & POETIC PUNK ROCK.....	32
<b>Fall/Winter 2015/2016 Trends – Secrets of the Soul.....</b>	<b>41</b>
• Classic Trend – THE ART OF EXPRESSION.....	42
• Progressive Trend – THE STILLNESS WITHIN.....	49
• Romantic – THE SEDUCTION OF TOUCH.....	55
• Glamour – THE DARKNESS OF DESIRE.....	62

*\*Unless otherwise noted, projects are designed by the Susan Kazarian design team at The Beading Frenzy.*



CREATE  
YOUR STYLE

SWAROVSKI

# ENTER THE CREATE YOUR STYLE DESIGN CONTESTS!

- Use the trend information and design inspirations found within this e-book, along with the newest Swarovski crystal innovations to create your own on-trend designs for all four seasons in 2015.
- Then, be sure to enter them into our design contests for your chance to **win up to \$500.00 in Swarovski crystals!**
- There will be four design contests throughout the year, so be sure to enter all 4 and increase your chances of winning!

---

## The contest themes and schedule is as follows:

- Spring Trend Theme Design Contest: January 1st – February 15th.
  - Summer Trend Theme Design Contest: April 1st – May 15th.
  - Fall Trend Theme Design Contest: July 1st – August 15th.
- Winter Trend Theme Design Contest: October 1st – November 15th.

Please visit: [CREATE-YOUR-STYLE.COM](http://CREATE-YOUR-STYLE.COM) for more information and contest rules.

# SPRING/SUMMER 2015 TRENDS

## TRACES OF TIME

Today, the phenomenon of aging societies is having a huge impact on a global scale. By 2050 more than two billion people will be older than 60. In the majority of Western countries, life expectancy is well above 80, while in new economies life expectancy lies between 65 and 72. This in turn has led to a new perception of age. The Mega Trend, the Silver Society, sees a new breed of people over 50 who increasingly view themselves as younger, more virile, and more agile.

At the same time, we are witnessing a change in the mindset of other age groups. For instance, the recent phenomenon of 40 year olds experiencing what is being termed "second puberty," where they increasingly relish being carefree and spontaneous and engage in leisure activities traditionally favored by teens.

In contrast, younger generations are now experiencing a development called "early adulting." Due to the ongoing crisis, coupled with worldwide career competition, younger people have become less rebellious and more career oriented.

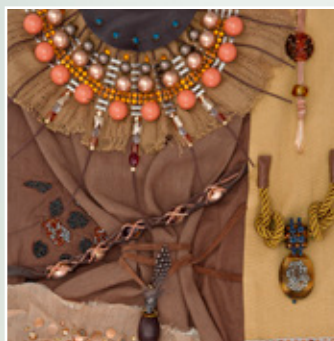
With such an extreme focus on age and its meaning within social, demographic, and economic contexts, this season we wish to highlight this important phenomenon – the converging of age – and its impact on consumer desires, lifestyles, and aesthetic directions.

Each of our four themes is driven by an interpretation of time and age.

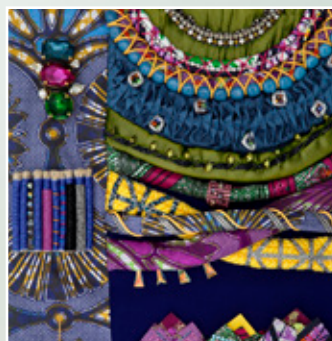
- In the Classic theme we are revisiting the concept of nostalgia and past care-freeness.
- In the Romantic theme we are rediscovering our most primal and ancient forms of existence.
- In the Progressive theme we are projecting a future filled with cultural blending.
- In the Glamour theme we are relishing a sensual exotic past.



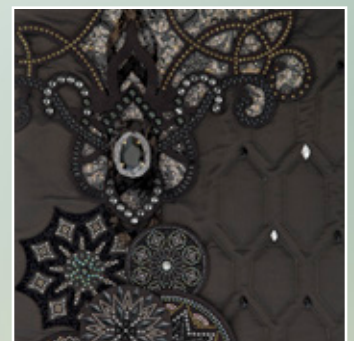
Classic theme



Romantic theme



Progressive theme



Glamour theme

CREATE  
YOUR STYLE

SWAROVSKI

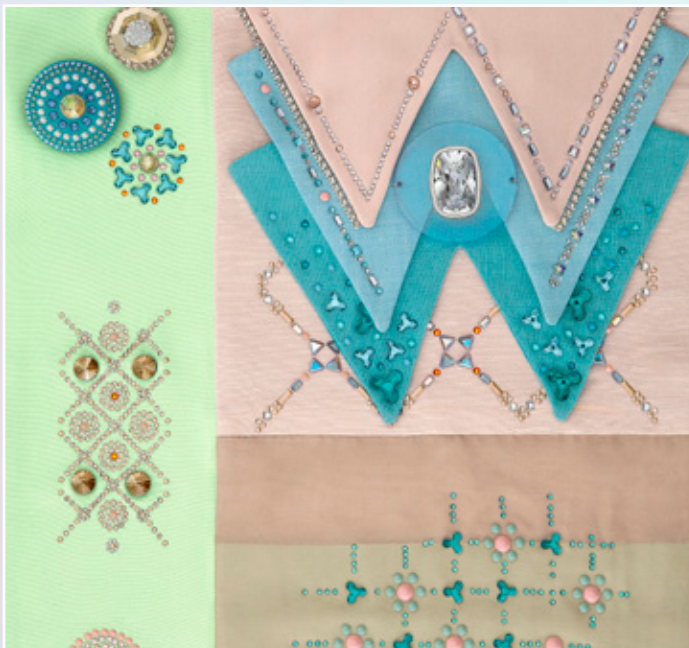
# CLASSIC TREND

## FADED MEMORIES

There is an increasing focus on tactility and texture in all design. Monochromatic opaque finishes used in traditional shapes and tone-on-tone crystals and sophisticated opal hues subtly light up the surface. There is an increasing focus on tactility and texture in all design. Tone-on-tone crystals and sophisticated opal hues subtly light up the surface. A playful, fun and effortless look is prominent.

### Color concept:

Opaque hues, matt and powdery, have a life of their own, saturated and evaporated, they delight with childlike innocence.



CREATE  
YOUR STYLE



SWAROVSKI

PROJECT DESIGNS FOR THE CLASSIC  
TREND, FADED MEMORIES

## GOLDEN GREEN LAGOON NECKLACE

### Materials

Swarovski crystals

Product Group	Article No.	Amount	Size	Color	Color Code
Beads	5000	50 pcs	6mm	Crystal Iridescent Green	001 IRIG
Beads	5000	24 pcs	8mm	Crystal Iridescent Green	001 IRIG
Beads	5040	24 pcs	8mm	Crystal Iridescent Green	001 IRIG
Mini Beads	5054	24 pcs	8mm	Crystal Iridescent Green	001 IRIG
Beads	5328	80 pcs	4mm	Crystal Iridescent Green 2X	001 IRIG
Crystal Pearls	5810	36 pcs	5mm	Crystal Iridescent Green	001 930
Crystal Pearls	5810	20 pcs	8mm	Crystal Iridescent Green	001 930
Crystal Pearls	5840	24 pcs	6mm	Crystal Iridescent Green	001 930
Crystal Pearls	5840	16 pcs	8mm	Crystal Iridescent Green	001 930
Crystal Pearls	5860	22 pcs	10mm	Crystal Iridescent Green	001 930
Crystal Pearls	5860	8 pcs	14mm	Crystal Iridescent Green	001 930

Supplies:

- 4 – 1 ¼" Radiant Rings TierraCast® 94-3112-25
- 2 – 1" Hammertone Rings TierraCast® 94-3095-25
- 12 – 8mm gold jump rings
- 4 – 2x2mm crimp beads
- 4 – 3mm crimp bead covers
- 108" – 0.018 stringing wire
- 6" – 20 gauge gold wire
- Scotch Tape

*Continuation on next page*

*Golden Green Lagoon Necklace, page 2*

### Instructions

- Step 1: Cut stringing wire into six 18" pieces and set aside
- Step 2: Cut 20 gauge wire into four 1½" pieces and set aside.
- Step 3: Using one piece of 20 gauge wire make a simple loop, slide on one Crystal Pearl art 5860 14mm Crystal Iridescent Green and make a simple loop to close. Repeat 3 more times and set aside.
- Step 4: Using one 1" Hammertone Ring attach on 2 8mm jump rings. Using components made in Step 3 attach one pearl component to one of the jump rings.
- Step 5: Using one 1¼" Radiant Ring attach on 2 8mm jump rings. Using the pearl component section from Step 4 attach to the Radiant Ring. Repeat this step 2 more times. Now attach the final pearl component from Step 3 to the third radiant ring and complete by attaching opposite side to the last 1" Hammertone Ring. Set aside.
- Step 6: Using 3 pieces of stringing wire slide all three through one crimp bead and one Crystal Pearl art 5860 14mm Crystal Iridescent Green. Crimp these 3 wires to the open jump ring on one end of the Hammertone Ring of the section completed in Step 5. Cover with Crimp cover.
- Step 7: Lay out the 3 strands of wire. Working with one strand at a time randomly string on the following items until you reach 14" in length, Bead art 5000 6mm Crystal Iridescent Green, Bead art 5000 8mm Crystal Iridescent Green, Bead art 5040 8mm Crystal Iridescent Green, Bead art 5054 8mm Crystal Iridescent Green, Bead art 5328 4mm Crystal Iridescent Green 2X, Crystal Pearl art 5810 5mm Crystal Iridescent Green, Crystal Pearl art 5810 8mm Crystal Iridescent Green, Crystal Pearl art 5840 6mm Crystal Iridescent Green, Crystal Pearl art 5840 8mm Crystal Iridescent Green, and Crystal Pearl art 5860 10mm Crystal Iridescent Green. Tape each end.
- Step 8: Using all three completed strands from Step 7 begin to braid the beads until the end. Take all three strands of wire and string on one Crystal Pearl art 5860 14mm Crystal Iridescent Pearl and one crimp bead. Crimp to one 8mm jump ring. Cover with Crimp cover.
- Step 9: Repeat Steps 6-8 for opposite side.
- Step 10: Using the last 1¼" Radiant Ring connect to the two braided sets of bead strands with the 8mm jump ring.



Project designs for the Classic Trend, Faded Memories  
GOLDEN GREEN LAGOON NECKLACE

CREATE  
YOUR STYLE

SWAROVSKI

PROJECT DESIGNS FOR THE CLASSIC  
TREND, FADED MEMORIES

# GOLDEN GREEN LAGOON

DROP EARRINGS & CHANDELIER EARRINGS

## Materials

Swarovski crystals

Product Group	Article No.	Amount	Size	Color	Color Code
Beads	5040	4 pcs	8mm	Crystal Iridescent Green	001 IRIG
Beads	5328	4 pcs	4mm	Crystal Iridescent Green 2X	001 IRIG
Pendants	6028	10 pcs	8mm	Crystal Iridescent Green	001 IRIG
Pendants	6628	2 pcs	8mm	Crystal Iridescent Green	001 IRIG
Crystal Pearls	5860	2 pcs	10mm	Crystal Iridescent Green	001 930
Crystal Pearls	5860	4 pcs	12mm	Crystal Iridescent Green	001 930
Crystal Pearls	5860	2 pcs	14mm	Crystal Iridescent Green	001 930

Supplies:

- 2 – 1" Hammertone Rings TierraCast® 94-3095-25
- 14 – 8mm gold jump rings
- 4 – gold add a bead ear wires
- 8" – 20 gauge gold wire

## Instructions for Drop Earrings

Step 1: Cut two 3" pieces of 20 gauge wire and set aside.

Step 2: Using one piece of wire make a simple loop at one end. Slide on one Crystal Pearl art 5860 10mm Crystal Iridescent Green, one Bead art 5040 8mm Crystal Iridescent Green, one Crystal Pearl art 5860 12mm Crystal Iridescent Green, one Bead art 5040 8mm Crystal Iridescent Green, and one Crystal Pearl art 5860 14mm Crystal Iridescent Green, make a simple loop to close.

Step 3: Using one 8mm jump ring attach one Pendant art 6628 8mm Crystal Iridescent Green to the smaller bottom end of the wire component made in Step 2.

*Continuation on next page*

*Golden Green Lagoon Drop Earrings & Chandelier Earrings, page 2*

- Step 4: Using one add a bead ear wire slide on one Bead art 5328 4mm Crystal Iridescent Green 2X and make a simple loop to close. Attach this ear wire to the opposite end of the component made in Step 3. Repeat Steps 1 – 4 to make other earring.
- Step 5: Repeat Steps 2 – 4 to make other earring.

### Instructions for Chandelier Earrings

- Step 1: Cut two 1" pieces of 20 gauge wire and set aside.
- Step 2: Using one piece of wire make a turn the end to make a head pin. Slide on one Crystal Pearl art 5860 12mm Crystal Iridescent Green and make a simple loop to close.
- Step 3: Using one 8mm jump ring attach one Pendant art 6028 8mm Crystal Iridescent Green to the Hammertone Ring. Repeat this 4 more times and set aside.
- Step 4: Using one add a bead ear wire slide on one Bead art 5328 4mm Crystal Iridescent Green 2X and make a simple loop to close.
- Step 5: Using one 8mm jump ring connect the ear wire and the pearl component made in step 2 to the opposite side of the Hammertone Ring made in Step 3.
- Step 6: Repeat Steps 2 – 5 to make other earring.



Project designs for the Classic Trend, Faded Memories  
GOLDEN GREEN LAGOON DROP EARRINGS & CHANDELIER EARRINGS

CREATE  
YOUR STYLE

SWAROVSKI

PROJECT DESIGNS FOR THE  
CLASSIC TREND, FADED MEMORIES

## ARCTIC RAINBOWS EARRINGS



### Materials

Swarovski crystals

Product Group	Article No.	Amount	Size	Color	Color Code
Pave – balls	86-001	14	4mm	Crystal AB	001 AB
Pave – BeCharmed	80101	2	14mm	Crystal AB	001 AB

Supplies:

- 2pc – 9 Hole End Bar in brass
- 1" – Embossed brass cable chain 9x6mm
- 5" – Brass cable chain 2x6mm
- 1pr – Earring wire NB copper
- 2pc – small oval jump rings, brass
- 12pc – 2" 24g balled copper head pins

### Instructions

- Step 1: Cut the Brass Cable chain 2x6mm into 4 pieces 8 links in length. Set aside
- Step 2: Slip (1) balled head pin through (1) Art. 86-001 4mm Pave ball Crystal AB. Using (1) piece of chain from step 1, slip the head pin with the ball on it through one end chain link. Next, slip the head pin into the outer hole of (1) 9 Hole End Bar. From the backside of the end bar, nip the wire to about 10mm. Using a round nose plier, rotate the wire into a coil until it tightens against the end bar. Repeat step for opposite end.
- Step 3: Slip (1) balled head pin through (1) Art. 86-001 4mm Pave ball Crystal AB and slip it through the third hole from the end of the 9 Hole End Bar. From the backside of the end bar, nip the wire to about 10mm. Using a round nose plier, rotate the wire into a coil until it tightens against the end bar. Repeat step for the third hole on the opposite end.
- Step 4: Slip (1) balled head pin through (1) Art. 86-001 4mm Pave ball Crystal AB and slip it through the fifth hole in the center of the 9 Hole End Bar. From the backside of the end bar, nip the wire to about 10mm. Using a round nose plier, rotate the wire into a coil until it tightens against the end bar.

*Continuation on next page*

*Arctic Rainbows Earrings, page 2*

- Step 5: Using (1) balled head pin slip on (1) Art. 86-001 4mm Pave ball Crystal AB, (1) Art. 80101 14mm Pave BeCharmed bead Crystal AB, (1) Art. 86-001 4mm Pave ball Crystal AB and wire wrap a loop.
- Step 6: Using (1) link from the Embossed Brass Cable chain 9x6mm attach the beaded component made in step 5 to the loop of the 9 Hole End Bar.
- Step 7: Attach (1) small oval jump ring to both end chain links on the earring unit.
- Step 8: Attach the earring wire to the small oval jump ring.
- Step 9: Repeat steps 2 – 8 for the second pair.



Project designs for the Classic Trend, Faded Memories  
ARCTIC RAINBOWS EARRINGS

CREATE  
YOUR STYLE

SWAROVSKI

# ROMANTIC TREND

## SUNSET RITUALS

A focus on nature's immense power is echoed increasingly in design forms, structures and materials. Romantic jewelry is inspired by the lifestyle and beliefs of the desert tribes, concentrating more on the emotional value (e.g. talismans) than the technical execution. Hand-made, rugged shapes combine with luxurious crystals to create a new jewelry aesthetic. Basic, organic shapes come together in random order – often asymmetrical – to create jewelry that looks like it is designed on impulse. Primitive jewelry techniques (e.g. simple beading) add lightness and a refined simplicity to design. From ancient times, pearls were considered a precious talisman and play an important role in this trend.

### Color concept:

Colors are vibrant handcraft shades taken from the earth with warm ochre, tangerine, and deep browns married with blue to echo ancient lands and desert landscapes



CREATE  
YOUR STYLE



SWAROVSKI

PROJECT DESIGNS FOR THE  
ROMANTIC TREND, SUNSET RITUALS

## TANGERINE SUNSET MULTI-STRAND NECKLACE

### Materials

Swarovski crystals

Product Group	Article No.	Amount	Size	Color	Color Code
Mini Beads	5051	16 pcs	10x8mm	Jet	280
Mini Beads	5051	42 pcs	8x6mm	Crystal Red Magma	001 REDM
Mini Beads	5052	46 pcs	6mm	Jet	280
Mini Beads	5053	64 pcs	6mm	Jet	280
Mini Beads	5054	35 pcs	8mm	Crystal Red Magma	001 REDM
Mini Beads	5055	39 pcs	8x6mm	Tangerine	259
Mini Beads	5056	29 pcs	10x6mm	Tangerine	259
Beads	5050	12 pcs	14x10mm	Jet	280
Beads	5328	108 pcs	3mm	Jet	280
Beads	5328	47 pcs	4mm	Jet	280
Beads	5328	87 pcs	4mm	Crystal Red Magma	001 REDM
Beads	5328	78 pcs	4mm	Tangerine	259

Supplies:

- 1 – Classic Hook
- 6" – Embossed Brass Cable Chain 9x6mm
- 2 – 12 Hole End Bar Connectors
- 2 – 2x2mm crimp beads
- 2 – 3mm Crimp Bead Covers
- 175" – 0.018 stringing wire

*Continuation on next page*

*Tangerine Sunset Multi-Strand Necklace, page 2*

## Instructions

- Step 1: Cut stringing wire into seven 25" pieces
- Step 2: Using 12 hole End Bar connect one piece of stringing wire with crimp to the #1 hole in the bar. Cover with crimp. Repeat this step six more times for #3, #5, #6, #8, #10, & #12 holes.
- Step 3: Starting with #1 hole string on three Beads art 5328 4mm Jet and one Bead art 5052 6mm Jet. Then string on one Bead art 5328 3mm Jet and one Bead art 5052 6mm Jet. Repeat this pattern 44 more times, then string on three Beads art 5328 4mm Jet. String on one crimp bead and crimp to the #1 hole in the other 12 Hole End Bar.
- Step 4: Starting with #3 hole string on three Beads art 5328 4mm Crystal Red Magma and one Bead art 5054 8mm Crystal Red Magma. Then string on one Bead art 5328 4mm Crystal Red Magma and one Bead art 5054 8mm Crystal Red Magma. Repeat this pattern 33 more times, then string on three Beads art 5328 4mm Crystal Red Magma. String on one crimp bead and crimp to the #3 hole in the other 12 Hole End Bar.
- Step 5: Starting with #5 hole string on three Beads art 5328 4mm Tangerine and one Bead art 5056 10x8mm Tangerine. Then string on one Bead art 5328 4mm Tangerine and one Bead art 5056 10x8mm Tangerine. Repeat this pattern 27 more times, then string on three Beads art 5328 4mm Tangerine. String on one crimp bead and crimp to the #5 hole in the other 12 Hole End Bar.
- Step 6: Starting with #6 hole string on four Beads art 5328 4mm Jet and one Bead art 5051 10x8mm Jet. Then string on one Bead art 5328 4mm Jet and one Bead art 5051 10x8mm Jet. Repeat this pattern 6 more times. String on one Bead art 5328 4mm Jet and one Bead art 5051 10x8mm Jet. Repeat this pattern 11 more times. Then string on one Bead art 5328 4mm Jet and one Bead art 5051 10x8mm Jet. Repeat this pattern 7 more times. Then string on four Beads art 5328 4mm Jet. String on one crimp bead and crimp to the #6 hole in the other 12 Hole End Bar.
- Step 7: Starting with #8 hole string on three Beads art 5328 4mm Tangerine and one Bead art 5055 8x6mm Tangerine. Then string on one Bead art 5328 4mm Tangerine and one Bead art 5055 8x6mm Tangerine. Repeat this pattern 37 more times, then string on three Beads art 5328 4mm Tangerine. String on one crimp bead and crimp to the #8 hole in the other 12 Hole End Bar.
- Step 8: Starting with #10 hole string on three Beads art 5328 4mm Crystal Red Magma and one Bead art 5051 8x6mm Crystal Red Magma. Then string on one Bead art 5328 4mm Crystal Red Magma and one Bead art 5051 8x6mm Crystal Red Magma. Repeat this pattern 40 more times, then string on three Beads art 5328 4mm Crystal Red Magma. String on one crimp bead and crimp to the #10 hole in the other 12 Hole End Bar.
- Step 9: Starting with #12 hole string on three Beads art 5328 4mm Jet and one Bead art 5053 6mm Jet. Then string on one Bead art 5328 3mm Jet and one Bead art 5053 6mm Jet. Repeat this pattern 62 more times, then string on three Beads art 5328 4mm Jet. String on one crimp bead and crimp to the #12 hole in the other 12 Hole End Bar.
- Step 10: Cut the chain into two 3" pieces. Attach one piece to each end of the 12 Hole End Bar.
- Step 11: Attach the S Hook to one end of the chain.



Project designs for the Romantic Trend, Sunset Rituals  
TANGERINE SUNSET MULTI-STRAND NECKLACE

CREATE  
YOUR STYLE

SWAROVSKI



PROJECT DESIGNS FOR THE  
ROMANTIC TREND, SUNSET RITUALS

## TANGERINE DREAM EARRINGS

### Materials

Swarovski crystals

Product Group	Article No.	Amount	Size	Color	Color Code
Beads	5040	60	4mm	Tangerine	259
Beads	5000	4	8mm	Tangerine	259
Beads	5328	12	4mm	Tangerine	259
Mini Beads	5054	14	6mm	Tangerine	259
Mini Beads	5055	14	8x6mm	Tangerine	259
Mini Beads	5056	14	10x6mm	Tangerine	259

Supplies:

- 1 pair – gold ear wires
- 2 pc – 6-petal link TierraCast® 94-3145-24
- 4 feet – 22g round gold wire

### Instructions

- Step 1: Cut 12 pieces of 22g gold wire 3" each. Using (1) wire, turn a small loop. Repeat 11 times. Using a hammer and metal block, flatten the loop to create a head pin. Repeat 11 times. Set aside.
- Step 2: Cut 2 pieces of 22g gold wire 5" each. Set aside. Repeat step 1 for the (2) 5" pieces of 22g wire. Set aside.
- Step 3: Slip (1) 5328 4mm Tangerine bicone onto (1) earring blank. Turn a loop. Repeat once and set aside.
- Step 4: Using (1) wire head pin made in step 1, slip on (1) Art. 5056 10x6mm Tangerine drop mini bead, (1) 4mm Art. 5040 4mm Tangerine briolette, (1) Art. 5055 8x6mm Tangerine rectangle mini bead, (1) 4mm Art. 5040 4mm Tangerine briolette, (1) Art. 5054 6mm Tangerine rhombus mini bead and (3) 4mm Art. 5040 4mm Tangerine briolette beads. Make a simple loop. Repeat 11 times more. Set aside.

*Continuation on next page*

*Tangerine Dream Earrings, page 2*

- Step 5: Using (1) wire head pin made in step 2, slip on (1) Art. 5056 10x6mm Tangerine drop mini bead, (1) Art. 5028 4mm Tangerine bicone, (1) Art. 5055 8x6mm Tangerine rectangle mini bead, (1) Art. 5028 4mm Tangerine bicone, (1) Art. 5054 6mm Tangerine rhombus mini bead, (3) Art. 5028 4mm Tangerine bicones and (1) Art. 5000 8mm Round bead. Repeat once and set aside.
- Step 6: Using one component in step 5, slip head pin through the center hole of (1) gold 6-petal link. Add (1) Art. 5000 8mm Tangerine round bead. Create a simple loop. Note: you may opt to wire wrap the loop instead as seen on sample. Repeat once. Set aside.
- Step 7: Using 6 components made in step 4, open each loop. Attach one head pin component to one outside petal on the 6-petal link. Repeat five times. Set aside.
- Step 8: Repeat step 7 once.
- Step 9: Using the earring wire made in step 3, open ring and attach to earring component. Repeat for second side.



Project designs for the Romantic Trend, Sunset Rituals  
**TANGERINE DREAM EARRINGS**



CREATE  
YOUR STYLE

SWAROVSKI

PROJECT DESIGNS FOR THE  
ROMANTIC TREND, SUNSET RITUALS

# GOLDEN ICICLE

## NECKLACE AND EARRINGS

### Materials

Swarovski crystals

Product Group	Article No.	Amount	Size	Color	Color Code
<b>Necklace:</b> as shown length 17", Note: adjust pearl count for length					
Crystal Pearls	5810	24	10mm	Crystal Bright Gold	001 306
Crystal Pearls	5810	22	10mm	Crystal Bright Gold	001 306
Pendant	6017/G	1	56mm	Crystal Blue Shade	001 BLSH
<b>Earring:</b>					
Crystal Pearls	5810	14	4mm	Crystal Bright Gold	001 306
Crystal Pearls	5810	8	3mm	Crystal Bright Gold	001 306
Pendant	6017/G	2	30mm	Crystal Blue Shade	001 BLSH

Supplies:

- 1 pr – gold earring blank
- 2 – gold oval jump rings
- 2 – gold round jump rings
- 1 – gold Classic S Hook
- 1 – gold Pinch bail
- 4 – gold clamshells
- 9 – feet Gold silk thread for knotting, size E
- 1 – flexible twisted wire needle (for knotting)
- Liquid Cement or clear nail polish

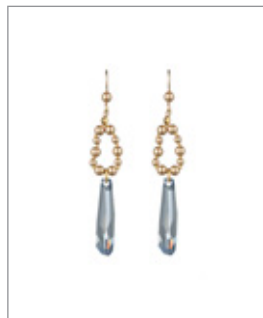
*Continuation on next page*

### Instructions for Necklace

- Step 1: Using (1) Nouveau Pinch Bail, attach to (1) Art. 6017/G 56mm Crystal Blue Shade Crystalactite Pendant.grand. Set aside.
- Step 2: Using (1) gold oval jump ring, attach to (1) Art. 6017/G 30mm Crystal Blue Shade Crystalactite Pendant.grand. Repeat once and set aside.
- Step 3: Using ~6 feet of gold silk thread, thread the needle bringing the two tails together and create an overhand knot. Slip on (1) gold clamshell. Note: make sure the clamshell is hugging the knot, so when it is closed you no longer see the knot. Drop (1) drop of glue onto the knot created. Note: you may substitute the nail polish for the cement.
- Step 4: Slip onto the silk thread (1) Art. 5810 10mm Crystal Bright Gold pearl. Create an overhand knot. Next slip on (1) Art. 5810 4mm Crystal Bright Gold pearl and create an overhand knot. Continue in this pattern 11 times more.
- Step 5: Using the necklace component in step 4, slip on the pendant component made in step 1. Next, slip onto the silk thread, (1) Art. 5810 10mm Crystal Bright Gold pearl. Create an overhand knot. Next slip on (1) Art. 5810 4mm Crystal Bright Gold pearl and create an overhand knot. Continue in this pattern 10 times more. Slip on the last Art. 5810 10mm Crystal Bright Gold pearl and (1) gold clamshell. Note: the back of the clamshell sits next to the pearl. Inside the clamshell perform a square knot. Trim the thread to about 2". Drop (1) drop of cement onto the knot inside the clamshell. Set aside. Keep the needle to reuse for the earring portion.
- Step 6: When the glue appears dry, trim the thread tails next to both knots. Close each clamshell. Slip onto the hook of the clamshell (1) gold round jump ring. Close hook and repeat for the second side. Slip one end of the Classic S Hook onto one of the gold jump rings from this step. Pinch that end of the S hook closed, leaving the opposite end open for the closure.

### Instructions for Earrings

- Step 1: Using (1) gold earring blank, slip on (1) Art. 5810 4mm Crystal Bright Gold pearl. Create a simple loop. Repeat for the second pair and set aside.
- Step 2: Using 18" feet of gold silk thread, thread it through the flexible needle. Match up the tails and create an overhand knot. Slip on one (1) gold clamshell. Drop (1) drop of glue onto the knot. Slip on (1) Art. 5810 4mm Crystal Bright Gold pearl and create an overhand knot, next slip on (1) Art. 5810 3mm Crystal Bright Gold pearl and create an overhead knot. Repeat this pattern once. Slip on (1) Art. 5810 4mm Crystal Bright Gold pearl and create an overhand knot. Slip on (1) pendant component made in step 2. Slip on (1) Art. 5810 4mm Crystal Bright Gold pearl and create an overhand knot, next slip on (1) Art. 5810 3mm Crystal Bright Gold pearl and create an overhead knot. Repeat this pattern once. Slip on the last Art. 5810 4mm Crystal Bright Gold pearl and slip the thread through the back end of the clamshell added in the beginning of this step. Inside the clamshell perform a square knot. Note: the pearls are now in the shape of an oval. Drop (1) drop of cement onto the knot inside the clamshell. Set aside.
- Step 3: Repeat step 2 for the second pair.
- Step 4: When the glue appears dry, trim the thread tails next to both sets of knots. Close the clamshell. Attach (1) earring component made in step 1 to the hook of the clamshell. Close the hook. Repeat step for the second pair.



Project designs for the Romantic Trend, Sunset Rituals  
GOLDEN ICICLE NECKLACE AND EARRINGS

CREATE  
YOUR STYLE

SWAROVSKI

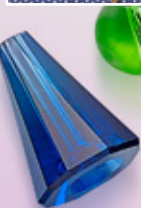
# PROGRESSIVE TREND

## VIVID MOMENTS

Focusing on an exciting, eclectic blend between African and Asian cultures, the Progressive theme highlights the union of both. A unique, eclectic and multilayered style that reflects the blend of traditional African and Asian craft and handwork techniques. Tradition meets technology – detailed shapes are easily produced by laser-cutting machines. A mix of materials – crystals, pearls, crystal beads, textiles and metals – combine to create rich 3D surfaces with sculptural aspects.

### Color concept:

Colors are bright and festive with historical folkloric hues that are cultivated all over the world. These happy and simple colors will bring a blooming brightness to the season.



CREATE  
YOUR STYLE

SWAROVSKI



PROJECT DESIGNS FOR THE PROGRESSIVE  
TREND, VIVID MOMENTS

## DIAMOND MINE EARRINGS

### Materials

Swarovski crystals

Product Group	Article No.	Amount	Size	Color	Color Code
Beads	5328	2	4mm	Montana	207
Pave - balls	86-001	2	10mm	Montana	207

Supplies:

- 2pc – small hammertone square TierraCast®:94-3099-61 (silver)
- 4pc – small hammertone square TierraCast®:94-3099-25 (gold)
- 1pr – gold ear wire
- 2 – round gold jump rings
- 2 – round silver jump rings
- 2 – oval gold jump rings
- 2 – oval silver jump rings
- 2 – silver head pins

### Instructions

- Step 1: Using (1) head pin, slip on (1) Art. 86-001 10mm Montana Pave bead. Create simple loop. Repeat once and set aside.
- Step 2: Using (1) earring blank, slip on (1) Art. 5328 4mm Montana bicone bead. Create simple loop. Repeat once and set aside.
- Step 3: Using (1) gold oval jump ring, attach to (1) bead component made in step 1 and to (1) silver small hammertone square. Close ring. Using (1) gold round jump ring, attach to the same silver small hammertone square and to (1) gold small hammertone square. Close ring. Using (1) gold round jump ring attach to the same gold small hammertone square and to (1) silver small hammertone square. Close ring. Using (1) gold oval jump ring, attach to the same silver small hammertone square and to (1) earring component made in step 2.
- Step 4: Using (1) silver oval jump ring, attach to (1) bead component made in step 1 and to (1) gold small hammertone square. Close ring. Using (1) silver round jump ring, attach to the same gold small hammertone square and to (1) silver small hammertone square. Close ring. Using (1) silver round jump ring attach to the same silver small hammertone square and to (1) gold small hammertone square. Close ring. Using (1) silver oval jump ring, attach to the same gold small hammertone square and to (1) earring component made in step 2.

CREATE  
YOUR STYLE

SWAROVSKI

PROJECT DESIGNS FOR THE PROGRESSIVE  
TREND, VIVID MOMENTS

# LUMINESCENCE NECKLACE



## Materials

Swarovski crystals

Product Group	Article No.	Amount	Size	Color	Color Code
Pendants	6628	12	8mm	Crystal Iridescent Green	001 IRIG
Beads	5328	32	4mm	Crystal Iridescent Green	001 IRIG
Beads	5040	7	8mm	Crystal Iridescent Green	001 IRIG
Mini Beads	5055	8	8x6mm	Crystal Iridescent Green	001 IRIG
Mini Beads	5055	6	10x8mm	Crystal Iridescent Green	001 IRIG
Mini Beads	5054	10	8mm	Crystal Iridescent Green	001 IRIG

Supplies:

- 12pc – 7mm Nugget/2mm TierraCast® 93-0450-25
- 12pc – large gold round jump rings
- 12pc – small gold round jump rings
- 14pc – 3mm faceted heishi TierraCast® 93-0422-25
- 2pc – gold crimp covers
- 2pc – 2x2 gold crimp bead
- 1pr – gold toggle set
- 20" – 0.015 beading wire

## Instructions

Step 1: Using (1) large jump ring attach to (1) 7mm Nugget bead and to (1) Art. 6628 Xilion Triangle pendant. Attach (1) small jump ring to the same 7mm Nugget bead. Repeat this step 11 more times. Set aside.

Step 2: On one end of the beading wire, crimp one end of the Melody toggle. Add crimp cover.

*Continuation on next page*

## *Luminescence Necklace, page 2*

- Step 3: Using the beading wire from step 2 string on the following: (1) Art. 5328 4mm bicone Crystal Iridescent Green, (1) Art. 5054 8mm Rhombus Mini bead Crystal Iridescent Green, (1) Art. 5328 4mm bicone Crystal Iridescent Green, (1) Art. 5055 8x6mm Rectangle Mini bead Crystal Iridescent Green, (1) Art. 5328 4mm bicone Crystal Iridescent Green, (1) Art. 5054 8mm Rhombus Mini bead Crystal Iridescent Green, (1) Art. 5328 4mm bicone Crystal Iridescent Green, (1) 3mm faceted heishi, (1) Art. 5040 8mm Briolette Crystal Iridescent Green, (1) 3mm faceted heishi. Repeat this pattern 1 times more.
- Step 4: Next add (1) Art. 5328 4mm bicone Crystal Iridescent Green, (1) Art. 5054 8mm Rhombus Mini bead Crystal Iridescent Green, \*\* (1) Art. 5328 4mm bicone Crystal Iridescent Green, (1) Art. 5055 8x6mm Rectangle Mini bead Crystal Iridescent Green, (1) Art. 5328 4mm bicone Crystal Iridescent Green, (1) dangle component made in step 1 (Note: as shown in the sample, the dangles alternated between facing front and facing back), (1) Art. 5055 10x8mm Rectangle Mini bead Crystal Iridescent Green, (1) dangle component, (1) Art. 5328 4mm bicone Crystal Iridescent Green, (1) 3mm faceted heishi, (1) Art. 5040 8mm Briolette Crystal Iridescent Green, (1) 3mm faceted heishi, (1) Art. 5328 4mm bicone Crystal Iridescent Green, (1) dangle component, (1) Art. 5055 10x8mm Rectangle Mini bead Crystal Iridescent Green, (1) dangle component. Repeat from \*\* twice more.
- Step 5: Next add (1) Art. 5328 4mm bicone Crystal Iridescent Green, (1) Art. 5055 8x6mm Rectangle Mini bead Crystal Iridescent Green, (1) Art. 5328 4mm bicone Crystal Iridescent Green, (1) Art. 5054 8mm Rhombus Mini bead Crystal Iridescent Green, (1) Art. 5328 4mm bicone Crystal Iridescent Green, (1) 3mm faceted heishi, (1) Art. 5040 8mm Briolette Crystal Iridescent Green, (1) 3mm faceted heishi, (1) Art. 5054 8mm Rhombus Mini bead Crystal Iridescent Green. Repeat once.
- Step 6: Lastly add, (1) Art. 5328 4mm bicone Crystal Iridescent Green, (1) Art. 5055 8x6mm Rectangle Mini bead Crystal Iridescent Green, (1) Art. 5328 4mm bicone Crystal Iridescent Green, (1) Art. 5054 8mm Rhombus Mini bead Crystal Iridescent Green, (1) Art. 5328 4mm bicone Crystal Iridescent Green.
- Step 7: At the end of the wire, crimp to the other end of the Melody toggle. Add crimp cover.



Project designs for the Progressive Trend, Vivid Moments  
LUMINESCENCE NECKLACE

CREATE  
YOUR STYLE

SWAROVSKI

PROJECT DESIGNS FOR THE PROGRESSIVE  
TREND, VIVID MOMENTS

# LUMINESCENCE EARRINGS



## Materials

Swarovski crystals

Product Group	Article No.	Amount	Size	Color	Color Code
Pendants	6628	6	8mm	Crystal Iridescent Green	001 IRIG
Beads	5328	2	4mm	Crystal Iridescent Green	001 IRIG

## Supplies:

- 16pc – 7mm Nugget/2mm TierraCast® 93-0450-25
- 2pc – small 3-hole gold D ring
- 24pc – large gold round jump rings
- 2pc – small gold round jump rings
- 1 pr – gold ear wires

## Instructions

- Step 1: Using the earring blank, slip on (1) Art. 5328 4mm Bicone Crystal Iridescent Green. Turn a simple loop. Repeat times 1 and set aside.
- Step 2: Using (1) large jump ring, attach to (1) 7mm Nugget bead and to (1) Art. 6628 Xilion Triangle pendant. Using (1) large jump ring attach to the 7mm Nugget just added and to (1) new 7mm Nugget bead. Attach (1) large jump ring to the last Nugget added. Repeat times 3 and set aside. Note: 2 Nugget beads should be linked with jump rings to the Xilion Triangle pendant.
- Step 3: Using (1) large jump ring, attach to (1) 7mm Nugget bead and to (1) Art. 6628 Xilion Triangle pendant. Using (1) large jump ring attach to the 7mm Nugget just added and to (1) new 7mm Nugget bead. Attach (1) large jump ring to the last Nugget added and to (1) new 7mm Nugget bead. Attach (1) large jump ring to the last Nugget added. Repeat times 1 and set aside. Note: 3 Nugget beads should be linked with jump rings to the Xilion Triangle pendant.
- Step 4: Using the 3-hole D Ring attach, (1) dangle component from step 2 into each outer hole and attach (1) dangle component from step 3 into the middle hole.
- Step 5: Attach (1) large jump ring to the top of the D ring and to (1) 7mm Nugget bead. Attach (1) more large jump ring to the top of the D ring and to the Nugget bead previously added. Attach (1) small jump ring to the same Nugget bead.
- Step 6: Using the earring blank from step 1 attach it to the small jump ring in step 5.
- Step 7: Repeat step 4 – 6 for the second pair.

CREATE  
YOUR STYLE

SWAROVSKI

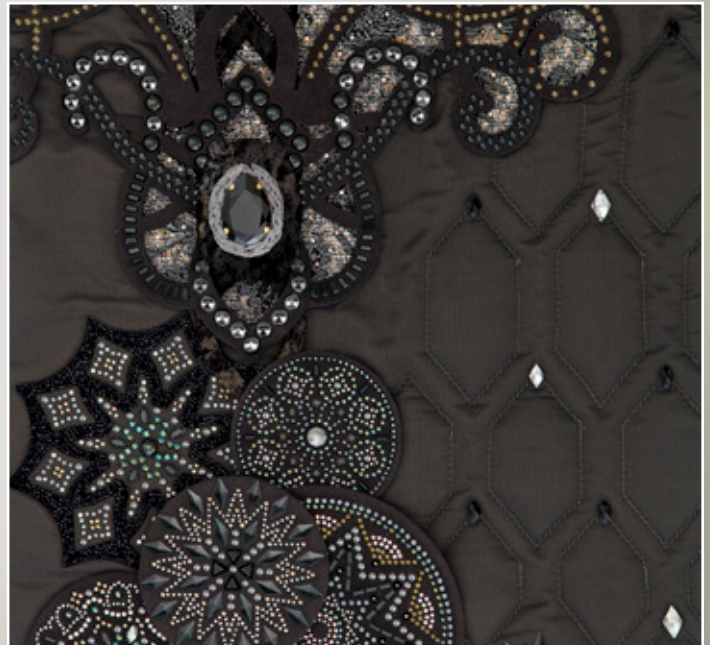
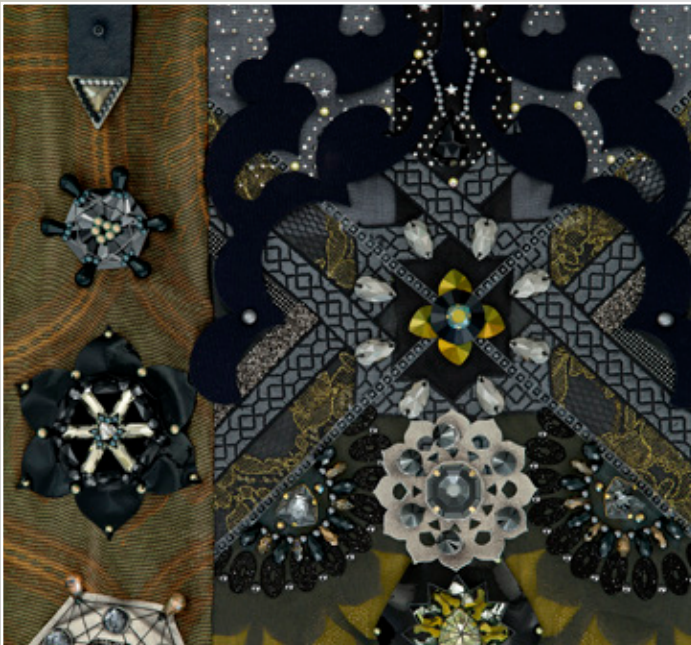
# GLAMOUR TREND

## FORGOTTEN DREAMS

Darkly magnetic colors in shades of mysterious, magnetic black, hide and reveal to create a glamorous, seductive theme. Opulent details are contrasted with clean surfaces. Fluid lines and detailed shapes become even more exquisite due to symmetrical mirror reflection. The circle symbolizes cycles, new beginnings and continuity – overtaking the triangle shape that stood for growth and stability. The circle as a shape was always present in ancient culture (e.g. cycle of the day – sun and moon, amulets, talismans). Multiplication of the same ornament/shape creates a lavish yet sophisticated look. A glamorous 3D design ethic in sculptural forms continues its ascent.

### Color concept:

Darkly magnetic colors in shades of mysterious, magnetic black hide and reveal to create a glamorous, seductive theme.



CREATE  
YOUR STYLE

SWAROVSKI

PROJECT DESIGNS FOR THE GLAMOUR TREND, FORGOTTEN DREAMS

# SKULDUGGERY NECKLACE

## Materials

Swarovski crystals

Product Group	Article No.	Amount	Size	Color	Color Code
Beads	5750	1 pc	19mm	Crystal Silver Night	001 SINI
Beads	5750	1 pc	13mm	Crystal Silver Night	001 SINI

## Supplies:

- 1pc – skull bead TierraCast® 94-5715-12
- 1pr – large tapered toggle
- 1.5" – embossed brass cable chain
- 2pc – 7mm nugget 3-hole bar
- 1pc – 2" head pin
- 2pc – 2" eye pin
- 40" – 2mm black leather cord
- 10" – 1mm black leather cord

## Instructions

- Step 1: Cut the 2mm leather cord into two equal pieces.
- Step 2: Using (1) piece from step 1, slip one end into an outer hole of (1) 7mm nugget 3-hole bar. Tie an overhand knot. Using the remaining piece of leather, slip one end into the opposite outer hole of the 3-hole bar. Tie an overhand knot.
- Step 3: Using the component made in step 2, slip the remaining end of leather into an outer hole of (1) 7mm nugget 3-hole bar. Adjust for length by shortening the leather as necessary keeping ~1" extra for the knot. Tie an overhand knot. Repeat and set aside.
- Step 4: Cut the 1mm leather cord into two equal pieces.
- Step 5: Using (1) piece made in step 4, slip the leather through the loop of one end of the tapered toggle clasp. Bring both ends evenly through the middle hole of the 3-hole bar from the outside to the inside on one end. Tie a knot on each end of the leather. Note: both knots will rest on the inside part of the 3-hole bar. Repeat for the opposite end using the remaining toggle piece. Trim tails from all leather knots, if desired, and set aside.

*Continuation on next page*

*Skulduggery Necklace, page 2*

- Step 6: Using (1) head pin, slip onto the TierraCast skull bead and create a simple loop. Set aside.
- Step 7: Using (1) eye pin, slip through the bottom hole of Art. 5750 13mm Crystal Silver Night Skull bead. Create a simple loop. Note: if desired create a wire wrapped loop. This will keep the skull from turning around. Set aside.
- Step 8: Using (1) eye pin, slip through the bottom hole of Art. 5750 19mm Crystal Silver Night Skull bead. Create a simple loop. Note: if desired create a wire wrapped loop. This will keep the skull from turning around. Set aside.
- Step 9: Remove one link from the embossed brass cable chain and add it to the TierraCast skull bead and the loop on the bottom of the Art. 5750 13mm Crystal Silver Night Skull bead. Close link. Repeat this step between the top of the 13mm Skull bead and the bottom of the Art. 5750 19mm Crystal Silver Night Skull bead. Close link.
- Step 10: Remove two links from the remainder of the embossed brass cable chain and attach to the top of the Art. 5750 19mm Crystal Silver Night Skull bead and to the loop of the ring side of the large tapered toggle clasp. Close links



Project designs for the Glamour Trend, Forgotten Dreams  
SKULDUGGERY NECKLACE

CREATE  
YOUR STYLE

SWAROVSKI

PROJECT DESIGNS FOR THE GLAMOUR  
TREND, FORGOTTEN DREAMS

# BLACK RAIN NECKLACE



## Materials

Swarovski crystals

Product Group	Article No.	Amount	Size	Color	Color Code
Pendant	6022	2	24mm	Jet	280
Pendant	6022	17	14mm	Jet	280

## Supplies:

- 18" – Embossed Brass Cable chain 9x6mm
- 5" – Brass Cable chain 8x5mm
- 14" – Flattened Brass Cable chain 4x2.5mm
- 1 pr – ½" toggle clasp
- 1 – 1" Hammertone Ring TierraCast® 94-3095-13

## Instructions

- Step 1: Remove 9 individual links from Embossed Brass Cable chain 9x6mm. Using the remainder of the chain, split evenly in half. Set aside.
- Step 2: Remove 17 individual links from Brass Cable chain 8x5mm. Set aside.
- Step 3: Using Flattened Brass Cable chain 4x2.5mm, cut into 7 pieces: 4", 3", 2", 1.75", 1.25", 0.75", and 0.5". Set aside.
- Step 4: Using (1) link from step 1, attach to (1) Art. 6022 24mm Xirius Raindrop pendant in Jet and to one end of the 4" piece of chain from step 3. Set aside.
- Step 5: Repeat step 4 using the 3" piece of chain from step 3. Set aside.
- Step 6: Using (1) link from step 2, attach to (1) Art. 6022 14mm Xirius Raindrop pendant in Jet and to one end of the 2" chain from step 3. Repeat this step 4 time more using the remainder of the chain from step 3. Set aside.
- Step 7: Using the links from step 2, attach one link to the 12 remaining Art. 6022 14mm Xirius Raindrop pendant in Jet. Set aside.

*Continuation on next page*

*Black Rain Necklace, page 2*

- Step 8: Using 1 of the pendant components made in step 7, attach into the first available link of the Flattened Brass Cable chain from step 4 proceeding from the 24mm pendant to towards the opposite end of the chain. Repeat 5 times more, linking into the next link on the chain. Note: the 6 pendants are occupying 6 consecutive links on the chain. Set aside.
- Step 9: Repeat step 8 using the component from step 5. Set aside.
- Step 10: Using the remaining links from step 1, attach to open end of the Flattened Brass Cable chain pendant components and to the 1" Hammertone ring in the following order: 4", 3", 2", 1.75", 1.25", 0.75" and 0.5". Set aside.
- Step 11: Using the two 8" pieces of Embossed Brass Cable chain from step 1, attach to the 1" Hammertone ring in consecutive order. On the open ends of each 8" chain, attach to each end of the 1/2" Anna's toggle clasp.



Project designs for the Glamour Trend, Forgotten Dreams  
**BLACK RAIN NECKLACE**

CREATE  
YOUR STYLE

SWAROVSKI



PROJECT DESIGNS FOR THE GLAMOUR  
TREND, FORGOTTEN DREAMS

## CROSS MY HEART EARRINGS

### Materials

Swarovski crystals

Product Group	Article No.	Amount	Size	Color	Color Code
Beads – Cross	5378	6 pcs	14mm	Jet	280
Beads – Xilion Bicone	5328	2 pcs	4mm	Jet	280

### Supplies:

- 2pc – TierraCast® 94-3150-40 Drilled Hammertone Cross
- 6pc – 2" silver head pins 21g
- 1pr – Silver earring wire
- 8pc – Silver Medium oval jump ring

### Instructions

- Step 1: Using your 1.8mm hole punch plier, punch a hole on each side of the short arm of the cross about 2mm from the edge. Repeat for the second side.
- Step 2: Attach one medium oval jump ring to each of the four holes. Repeat for the second side.
- Step 3: Thread one head pin through from the bottom to the top of (1) Swarovski Cross bead article 5378 14mm Jet. Create a simple loop. Repeat 5 times more.
- Step 4: Add one Cross charm made in step 3 to each of the jump rings added in step 2 omitting the jump ring at the top of the cross. Repeat for the second side.
- Step 5: Slip onto one earring blank (1) Swarovski Xilion Bicone article 5328 4mm Jet. Turn a simple loop. Attach to the remaining jump ring on the top of the cross. Repeat for the second side.

CREATE  
YOUR STYLE

SWAROVSKI

PROJECT DESIGNS FOR THE GLAMOUR  
TREND, FORGOTTEN DREAMS

# CROSSING PATHS BRACELET



## Materials

Swarovski crystals

Product Group	Article No.	Amount	Size	Color	Color Code
Beads – Cross	5378	8 pcs	14mm	Jet	280
Beads – Cross	5378	2 pcs	18mm	Crystal Silver Night 2x	001 SINI2

## Supplies:

- 2pc – TierraCast® 94-3150-40 Drilled Hammertone Cross
- 6 sets – TierraCast® 01-0060-45 4mm Compression Rivet
- 1pc – TierraCast® 21-0010-16 10" x ½" leather strap – red
- 10pc – Silver 2" head pin 21g
- 4pc – Silver Medium oval jump ring
- 1pc – Silver ½" Distressed E Hook

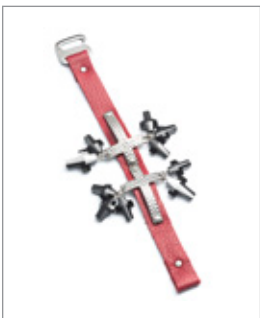
## Instructions

- Step 1: Keeping the leather strap on a flat surface. Place the two Hammertone Crosses on the leather strap, centered and facing each other. Mark the holes on the leather strap. Set aside.
- Step 2: Using (1) head pin, slip on (1) Swarovski Cross bead article 5378 14mm Jet and create a simple loop. Repeat 7 more times and set aside.
- Step 3: Using (1) head pin, slip on (1) Swarovski Cross bead article 5378 18mm Crystal Silver Night 2x and create a simple loop. Repeat once and set aside.
- Step 4: Using a metal hole punch (1.8mm) punch a hole on each side of the cross' short arm. Repeat for second cross. Using one medium oval jump ring attach to one hole just created and repeat for the other three holes. Set aside.
- Step 5: Using a leather hole punch (on smallest setting) punch a hole through each of the marks made in step 1.
- Step 6: Using the 4mm compression rivet sets, rivet down both Hammertone crosses onto the leather as positioned in step 1. Gently bend the cross to form a curve, both for the main body and for the short arm. Repeat for the second cross. Note: when you place the leather strap over your wrist the crosses should curve with your wrist shape. Note #2: For instructions on how to rivet, please go to [www.tierracast.com](http://www.tierracast.com)

*Continuation on next page*

*Crossing Paths Bracelet, page 2*

- Step 7: Note: The E hook closure will require 1" fold over on each side of the leather strap. Mark each end on the inside of the leather for the desired length of the bracelet, allowing about  $\frac{3}{4}$ " for the clasp. Fold one side of the leather on the mark and using your leather hole punch, punch a hole  $\frac{1}{2}$ " from the leather fold through both sides. Slip on the E hook closure, refold the leather aligning the holes and use one 4mm compression rivet to rivet on the clasp.
- Step 8: Fold the opposite side of the leather strap on the mark and using your leather hole punch, punch a hole  $\frac{1}{2}$ " from the leather fold. While keeping the holes aligned, use one 4mm compression rivet to rivet the second half of the closure (which is just the fold). Slip the open end of the E hook through the loop you created in this step to close off the bracelet.
- Step 9: Attach the crosses made in step 2 and 3 to the short arm of each cross by opening the medium oval jump ring. You may follow the picture for placement or place cross charms as desired.



Project designs for the Glamour Trend, Forgotten Dreams  
CROSSING PATHS BRACELET

CREATE  
YOUR STYLE

SWAROVSKI

# PRE-SEASON FALL/WINTER 2015/2016

## TRENDS: NOSTALGIC GRANDEUR & POETIC PUNK ROCK

The beauty and splendor of the past comes alive through the magnificent Crystal Patina effect with its subdued hues and reference to the grandeur of eras past. In contrast, a focus on the strong, bold directions of the future is stunningly showcased in the radiant Crystal Spikes and Studs collection.

**Nostalgic Grandeur:** Inspired by Venice's beauty, rich history, and masquerade balls, 'Nostalgic Grandeur' recalls baroque ballrooms and opulent mirrors. This theme is reflected in the new Crystal Patina effect: entirely unprecedented in the industry, its vintage look conveys a sense of timelessness. Available in five beautifully aged effects, each piece is unique, in step with the current design quest for authenticity.

**Poetic Punk Rock:** The re-emergence of high-glam, punk rock-inspired fashion coincides with a rising sense of 'austerity fatigue', prompting the return of opulence to our lives. The name given to this fiercely edgy, hip-lux look is 'Poetic Punk Rock' and features Crystal Spikes and Studs.



CREATE  
YOUR STYLE

SWAROVSKI

PROJECT DESIGNS FOR THE NOSTALGIC  
GRANDEUR TREND & POETIC PUNK ROCK

# SKULLS THAT GO "SPIKE" IN THE NIGHT

## LARIAT NECKLACE

### Materials

Swarovski crystals

Product Group	Article No.	Amount	Size	Color
Beads	5000	16 pcs	6mm	Jet Hematite FC (280 HEMFC)
Beads	5328	14 pcs	4mm	Crystal Silver Night (001 SINI)
Beads	5601	6 pcs	6mm	Crystal Silver Night (001 SINI)
Beads	5747	24 pcs	12x6mm	Crystal Silver Night (001 SINI2)
Beads	5747	12 pcs	16x8mm	Crystal Silver Night (001 SINI2)
Beads	5750	2 pcs	13mm	Crystal Silver Night (001 SINI)
Beads	5750	2 pcs	19mm	Crystal Silver Night (001 SINI2)
Crystal Pearls	5810	15 pcs	6mm	Crystal Black (001 298)
Pendants	6328	66 pcs	6mm	Black Diamond (215)

### Supplies:

- 60 pc – 3mm Faceted Bead TierraCast® 93-0422-12
- 12 pc – 5mm Faceted Bead TierraCast® 93-0423-12
- 12 pc – 2" Head Pin
- 2 pc – Rose Skull Bead TierraCast® 94-5685-12
- 2 pc – 2x2mm crimp bead
- 2 pc – 3mm crimp cover
- 36" – 0.018 stringing wire
- 6" – 20 Gauge Hematite Wire
- 16" – 2mm linked black chain

*Continuation on next page*

*Skulls that go "Spike" in the Night, page 2*

## Instructions

- Step 1: Cut linked chain into the following lengths and set aside: 2pc - 1/2", 4pc - 1", 4pc - 1 1/2", 2pc - 2".
- Step 2: Cut the 20 gauge wire into 2 - 3" pieces. Using one piece make a simple loop, slide on one bead art 5750 19mm Crystal Silver Night 2X and make a simple loop to close. Repeat once more and set aside.
- Step 3: Using one head pin slide on one Rose Skull Bead and make a simple loop. Attach to one 1" piece of chain and slip onto the bottom side of the simple loop on the Large Skull Bead made in Step 2. Using one head pin slide on one bead art 5000 6mm Jet Hematite FC and make a simple loop. Attach to one 1/2" piece of chain and slip onto the bottom side of the simple loop made in Step 2. Using one head pin slide on three pendants art 6328 6mm black diamond and make a simple loop. Attach to one 1 1/2" piece of chain and slip onto the bottom side of the simple loop made in Step 2. Using one head pin slide on one bead art 5000 6mm Jet Hematite FC and make a simple loop. Attach to one 1" piece of chain and slip onto the bottom side of the simple loop made in Step 2. Using one head pin slide on one bead art 5750 13mm Crystal Silver Night and make a simple loop. Attach to one 2" piece of chain and slip onto the bottom side of the simple loop made in Step 2. Using one head pin slide on one bead art 5000 6mm Jet Hematite FC and make a simple loop. Attach to one 1 1/2" piece of chain and slip onto the bottom side of the simple loop made in Step 2. Close the simple loop on the bottom of the Large Skull Bead. Repeat Step 3 to make second Skull Drop.
- Step 4: Using beading wire attach one end with crimp bead to top of one Large Skull Bead Drop made in Step 3. Attach crimp cover. Using other end string on one bead art 5328 4mm Crystal Silver Night.
- Step 5: Now begin the pattern by stringing on one 3mm faceted silver bead, one bead art 5747 12x6mm Crystal Silver Night 2X, one 3mm faceted silver bead, one bead art 5747 16x8mm Crystal Silver Night 2X, one 3mm faceted silver bead, one bead art 5747 12x6mm Crystal Silver Night 2X, one 3mm faceted silver bead, one bead art 5328 4mm Crystal Silver Night, five pendants art 6328 6mm Black Diamond, one 3mm faceted silver bead, one bead art 5328 4mm Crystal Silver Night, one 5mm faceted silver bead, one bead art 5601 6mm Crystal Silver Night, one 5mm faceted silver bead, one bead art 5328 4mm Crystal Silver Night, one 3mm faceted silver bead, five pendants art 6328 6mm Black Diamond, one 3mm faceted silver bead, one bead art 5747 12x6mm Crystal Silver Night 2X, one 3mm faceted silver bead, one bead art 5747 16x8mm Crystal Silver Night 2X, one 3mm faceted silver bead, one bead art 5747 12x6mm Crystal Silver Night 2X, one 3mm faceted silver bead, one Crystal Pearl art 5810 6mm Black, one bead art 5000 6mm Jet Hematite FC, one Crystal Pearl art 5810 6mm Black, one bead art 5000 6mm Jet Hematite FC, and one Crystal Pearl art 5810 6mm Black. Continue to repeat this pattern 4 more times.
- Step 6: Now to finish the design string on one 3mm faceted silver bead, one bead art 5747 12x6mm Crystal Silver Night 2X, one 3mm faceted silver bead, one bead art 5747 16x8mm Crystal Silver Night 2X, one 3mm faceted silver bead, one bead art 5747 12x6mm Crystal Silver Night 2X, one 3mm faceted silver bead, one bead art 5328 4mm Crystal Silver Night, five pendants art 6328 6mm Black Diamond, one 3mm faceted silver bead, one bead art 5328 4mm Crystal Silver Night, one 5mm faceted silver bead, one bead art 5601 6mm Crystal Silver Night, one 5mm faceted silver bead, one bead art 5328 4mm Crystal Silver Night, one 3mm faceted silver bead, five pendants art 6328 6mm Black Diamond, one 3mm faceted silver bead, one bead art 5747 12x6mm Crystal Silver Night 2X, one 3mm faceted silver bead, one bead art 5747 16x8mm Crystal Silver Night 2X, one 3mm faceted silver bead, one bead art 5747 12x6mm Crystal Silver Night 2X, one 3mm faceted silver bead, and one bead art 5328 4mm Crystal Silver Night.
- Step 7: Slide on one crimp bead and crimp to the second Large Skull Bead Drop made in Step 3. Attach crimp cover.



Project designs for the Nostalgic Grandeur Trend & Poetic Punk Rock  
SKULLS THAT GO "SPIKE" IN THE NIGHT

CREATE  
YOUR STYLE

SWAROVSKI

PROJECT DESIGNS FOR THE NOSTALGIC  
GRANDEUR TREND & POETIC PUNK ROCK

# SKULLS ON A SPIKE EARRINGS



## Materials

Swarovski crystals

Product Group	Article No.	Amount	Size	Color
Beads	5747	6 pcs	12x6mm	Crystal Silver Night (001 SINI2)
Beads	5750	2 pcs	13mm	Crystal Silver Night (001 SINI)

## Supplies:

- 6 pc – 3mm Faceted Bead TierraCast® 93-0422-12
- 12 pc – 2" Head Pin
- 2 pc – Black Ear wire

## Instructions

- Step 1: Using one head pin slide on one bead art 5750 12x6mm Crystal Silver Night, one 3mm faceted silver bead, one bead art 5747 12x6mm Crystal Silver Night 2X, one 3mm faceted silver bead, one bead art 5747 12x6mm Crystal Silver Night 2X, one 3mm faceted silver bead, and one bead art 5747 12x6mm Crystal Silver Night 2X.
- Step 2: Make a simple loop and attach to one ear wire.
- Step 3: Repeat for second earring.

CREATE  
YOUR STYLE



SWAROVSKI

PROJECT DESIGNS FOR THE NOSTALGIC  
GRANDEUR TREND & POETIC PUNK ROCK

# METALLICA EARRINGS

## Materials

Swarovski crystals

Product Group	Article No.	Amount	Size	Color
Double Spike Bead	5747	6	16x8mm	Crystal Metallic Blue 2x (001 METBL2)
Double Spike Bead	5747	8	12x6mm	Crystal Metallic Blue 2x (001 METBL2)
Beads – Xillion Bicone	5328	2	4mm	Crystal Metallic Blue 2x (001 METBL2)

Supplies:

- 1 pair – Silver Ear Wires
- 12" – 22g Silver Wire

## Instructions

Step 1: Cut 22g wire into two equal pieces.

Step 2: Using one piece of wire slip on (1) 12x6mm Art. 5747 Double Spike Bead in Crystal Metallic Blue 2x, (1) 18x8mm Art. 5747 Double Spike Bead in Crystal Metallic Blue 2x, (1) 12x6mm Art. 5747 Double Spike Bead in Crystal Metallic Blue 2x, (1) 18x8mm Art. 5747 Double Spike Bead in Crystal Metallic Blue 2x, (1) 12x6mm Art. 5747 Double Spike Bead in Crystal Metallic Blue 2x, (1) 18x8mm Art. 5747 Double Spike Bead in Crystal Metallic Blue 2x and (1) 12x6mm Art. 5747 Double Spike Bead in Crystal Metallic Blue 2x for a total of 7 beads.

Step 3: While keeping the beads lined up in the center of the 6" piece of wire, gently form the wire into a teardrop shape. Let end of the wires crisscross each other when you have reached your desired size. Using your needle nose pliers, bend one wire up at 90 degrees so it is pointing vertical and bend the other wire to cross in front of the vertical wire so it is pointing horizontal. Take the horizontal wire and create a wire wrap around the vertical wire; from the base of the oval to the point of the vertical wire. Note: make sure to wrap a minimum of 3 times and that your wraps are tight against the vertical wire. Nip and tuck in the tail.

Step 4: Make a simple loop out of the vertical wire.

Step 5: Using (1) earring blank, slip on (1) 4mm Art. 5328 Xillion Bicone bead in Crystal Metallic Blue 2x and create a simple loop. Attach the earring base loop to the ear wire.

Step 6: Repeat steps 2-5 for other earring.

CREATE  
YOUR STYLE

SWAROVSKI

PROJECT DESIGNS FOR THE NOSTALGIC  
GRANDEUR TREND & POETIC PUNK ROCK

# SPIKED LEE NECKLACE



## Materials

Swarovski crystals

Product Group	Article No.	Amount	Size	Color
Spike Pendant	6480	1	38mm	Crystal Golden Shadow (001 GSHA)
Spike Pendant	6480	2	28mm	Crystal Golden Shadow (001 GSHA)
Spike Pendant	6480	2	18mm	Crystal Golden Shadow (001 GSHA)

Supplies:

- 1 pc – Leather in Olive
- 7 pc – TierraCast® Eyelet Brass 6.8mm x 2mm
- 6 in – Round Brass Cable chain
- 18 pc – 16g jump rings brass
- 1 pr – ½" copper toggle clasp 94-6154-27

## Instructions

- Step 1: Using the leather strip, make a hole in the center (~5" from the end) using a leather hole punch on the smallest setting. Approximately ¾" from the center hole, make two holes; one to the left of center and one to the right of center. Approximately ½" from the hole just made, make one more hole on each side for a total of 5 holes. Note: the 5 holes should be centered in the middle of the leather strip.
- Step 2: Punch one hole ~3/16" from the edge on one side of the leather. Repeat for the opposite end.
- Step 3: For each of the 7 holes rivet in one Eyelet 6.8mm x 2mm. Note: each hole will now be designated 1 – 7 from the left. For detailed instructions on riveted eyelets please go to [www.TierraCast.com](http://www.TierraCast.com)
- Step 4: Attach (1) 16g jump ring to each of the Spike Pendants Art. 6480; 2 18mm, 1 28mm and 1 38mm. Attach (1) additional 16g jump ring to each of the jump rings just added.
- Step 5: Remove (1) link from the 10mm round brass cable chain and attach it to the second 16g jump ring on the 38mm Spike Pendant Art. 6480.

*Continuation on next page*

*Spiked Lee Necklace, page 2*

Step 6: Attach (1) each 16g jump ring to eyelets 1 – 7 made in step 3.

**Note:** for steps 7, 8 and 9 make sure the crystal coating on the pendants are facing in the same direction, either to the front or to the back, your choice.

Step 7: Attach (1) each 18mm Spike Pendant unit made in step 4 to eyelet # 2 and #6.

Step 8: Attach (1) each 28mm Spike Pendant unit made in step 4 to eyelet #3 and #5.

Step 9: Attach (1) 38mm Spike Pendant unit made in step 4 to eyelet #4.

Step 10: Measure your finished desire for the necklace and cut the remaining 10mm round brass cable chain to your desired length and split in half. Attach one piece of chain to the jump ring on the left and one piece of chain to the jump ring on the right.

Step 11: Using the last two 16g jump rings, attach each side of the clasp to each end of the chain from step 10.



Project designs for the Nostalgic Grandeur Trend & Poetic Punk Rock  
SPIKED LEE NECKLACE

# SPIKE IT TO ME BRACELET



## Materials

Swarovski crystals

Product Group	Article No.	Amount	Size	Color
Spike Pendant	6480	6	18mm	Crystal Golden Shadow (001 GSHA)

Supplies:

- 1 pc – leather in Antique Mocca
- 2 pc – TierraCast® Rivetable Celtic gold 94-5796-26
- 4 pc – TierraCast® Rivet Set 4mm cap, 5mm post gold 01-0060-25
- 1 pc – ½" E Hook gold
- 2 feet – 26g gold Wire (or copper whichever blends better with the leather)

## Instructions

- Step 1: Measure your desired length of leather and add 1.5" cut.
- Step 2: Turn one end of the wire ¾". While holding the folded leather in place, punch a hole through both pieces ~½" from the fold using a leather hole punch on the smallest setting. Repeat for opposite end.
- Step 3: Using (1) Rivet set, rivet one end of the folded leather, lining up the holes. Note: if you need riveting instructions, please go to [www.tierracast.com](http://www.tierracast.com) for directions
- Step 4: On the opposite side of the leather, slip on the E hook and re-fold the leather so the holes match up. Using (1) Rivet set, rivet the second end of the folded leather with the clasp attached.
- Step 5: Punch a single hole on each end of the leather ~½" from each rivet. Rivet on the Rivetable Celtic gold link on each side.
- Step 6: Measure the space between each riveted Celtic link. Divide the space by 6, for each of the Spike Pendants so that they are evenly spaced. Beginning with the first placement of the Pendant, punch two holes ¼" apart. Note: the Spike Pendant will sit between the two holes when completed. Punch 5 more sets of two holes evenly spaced across the leather at ~¼" apart.
- Step 7: Cut the 26g wire into 6 pieces ~4" each.
- Step 8: Using one piece of wire, enter one of the two paired holes for the pendant from the back of the leather, from the right side, slide onto the wire (1) Art. 6480 18mm Spike Pendant in Crystal Golden Shadow, slide the wire (from the right side) into the second hole of the pair which will exit out of the back side of the leather. Twist the wire together from the back, nip to ~¼" and tuck into the leather. Note: carefully twist the wire, as it is thin, it is easier to break off if you over manipulate it.
- Step 9: Repeat step 8 for the remaining Spike Pendants to complete.

CREATE  
YOUR STYLE



SWAROVSKI

PROJECT DESIGNS FOR THE NOSTALGIC  
GRANDEUR TREND & POETIC PUNK ROCK

## STRAIGHT AS AN ARROW EARRINGS

### Materials

Swarovski crystals

Product Group	Article No.	Amount	Size	Color	Color Code
Pave Thread Ring	85-001 2 holes	2 pcs	18.5mm	Montana	207
Beads – Arrow	5748	2 pcs	12mm	Crystal Golden Shadow	001-GSHA
Beads – Arrow	5748	2 pcs	16mm	Crystal Golden Shadow	001-GSHA
Beads – Xilion Bicone	5328	2 pcs	4mm	Montana	207

Supplies:

- 4pc – Grey or silver 2" head pin 21g
- 1pr – Grey or silver earring wire

### Instructions

- Step 1: Slip onto one earring blank (1) Swarovski Xilion Bicone article 5328 4mm Montana. Turn a simple loop. Repeat for second side. Set aside.
- Step 2: Slip one head pin into one hole (inside to outside) through (1) Swarovski Pave Thread Ring article 85-001 18.5mm Montana. Next slip on (1) Swarovski Arrow Bead article 5748 16mm Crystal Golden Shadow keeping the point of the bead towards the end of the head pin. Trim the head pin to about 15mm. Using a round nose plier, create a double loop towards the point of the bead. Note: keep the bead snug against the ring and be careful not to slip the point of the bead with your plier. Repeat for the second side.
- Step 3: Slip onto one head pin (1) Swarovski Arrow Bead article 5748 12mm Crystal Golden Shadow keeping the point of the bead towards the end of the head pin. Slip the head pin into the remaining hole (inside to outside) of the Swarovski Pave Thread Ring article 85-001 18.5mm Montana. Create a simple loop. Repeat for the second side.
- Step 4: Open the loop on the earring wire and attach to the loop on the outside of the Pave Thread Ring made in step 3. Close ring. Repeat for the second earring.

# FALL/WINTER 2015/2016 TRENDS

## SECRETS OF THE SOUL

Trend Overview: Today, within just one minute, people across the globe are sending 2,014 million emails, viewing six million Facebook profiles, and watching 1.3 million YouTube videos. In the US, people are spending 144 minutes on average on their mobile devices daily. This is twice the time that people take to eat and drink throughout an entire day, or a third of the time that people spend sleeping (immobi, 2013; US Bureau of Labor Statistics, 2013).

This "always on" mentality has led people to question their lifestyles and the inherent dangers of digital connectivity. People have become increasingly aware of the risk to their privacy or even their health. For example, 79% of Gen Zs – people born after the millennium and the first generation that has never lived without the internet – show addiction withdrawal reactions when they are kept from their digital devices and the internet (Grail, 2011).

The first National Day of Unplugging, held on March 7 and 8, 2014, high-lighted the rise of people going offline in order to experience calmness, relaxation, and comfort. This development is also thought to be linked to the current increase in people turning away from sites such as Facebook, which lost 9 million users in the US, 1.4 million users in the UK, and 1.2 million users in Germany in 2013 alone. (The Guardian and tech analysis firm SocialBakers)

According to reports by Scenario Magazine (2013) and strategy company PricewaterhouseCoopers (2014), the future job market will see an increased demand in creative and emotional capabilities, entirely human attributes that robots cannot replace. Hence, a large emphasis is now being placed on the qualities that make us inherently human. The need for connection, to step out from behind the screens and interact more, to create, to live, to breathe, to re-engage, and to experience.

As people on a global scale have started to realize that algorithms cannot replace real human contact and real meetings to experience affection or attraction, our four inspirational directions are hinged on specific human aspects that differentiate us from the robotic digital world which surrounds us.

For Fall/Winter 2015/16 we focus on what it means to be human and the qualities that set us apart and make life worth living.



Classic theme



Progressive theme



Romantic theme



Glamour theme

CREATE  
YOUR STYLE

SWAROVSKI

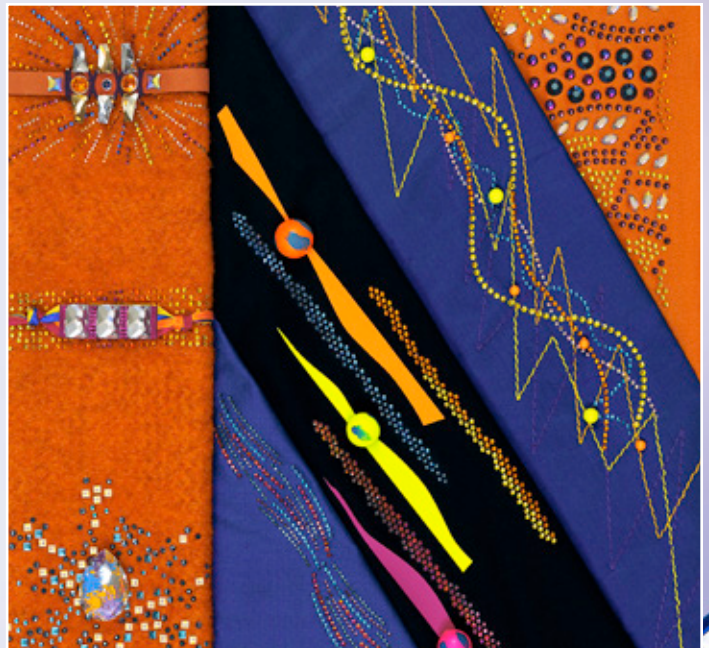
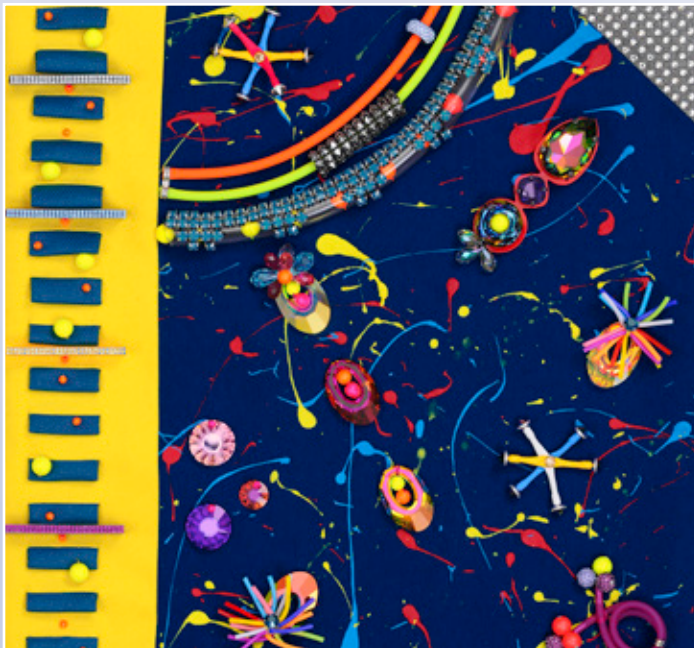
# CLASSIC TREND

## THE ART OF EXPRESSION

In this light-hearted trend, jewelry is transformed into quirky and playful creations. Movable parts introduce an interactive element, an invitation to play with the pieces and have fun. Colors can be shifted and changed according to the mood. Bright, bold color evokes a sense of joyful optimism. Crystal parts are reinvented with surprising new functions.

### Color concept:

Bright sugary hues offer a new play on uplifting, unexpected color to warm up even the coldest winter.



CREATE  
YOUR STYLE

SWAROVSKI

PROJECT DESIGNS FOR THE CLASSIC TREND  
– THE ART OF EXPRESSION

# DEEP BLUE QUEEN NECKLACE



## Materials

Swarovski crystals

Product Group	Article No.	Amount	Size	Color	Color Code
Pendant – Queen Baguette	6465	12 pcs	13.5x6mm	Crystal Bermuda Blue P	001 BBL
Pendant – Queen Baguette	6465	6 pcs	25x7mm	Crystal Bermuda Blue P	001 BBL
Pendant – Queen Baguette	6465	1 pc	38x10mm	Crystal Bermuda Blue P	001 BBL

Supplies:

- 16" – Brass Rolo 4.5mm chain
- 2pc – Medium oval jump rings
- 1 pr – ½" Toggle set
- 30" – 1mm Black Leather cord

## Instructions

- Step 1: Using one oval medium jump ring, attach one half of the clasp set to one end of the 16" length of chain. Repeat for second side using the second half of the clasp set.
- Step 2: Find the center point of the chain. Slip half of the leather cord through the center link of chain. Note: For this weaving step the chain links need to face in the same direction and you will work from the center out to the right and then repeat from the center to the left.
- Step 3: Using the right half of the leather coming out of the center link, slip through the front of the Swarovski Queen Baguette Pendant article 6465 38x10mm Crystal Bermuda Blue, slip the leather through the same chain link to form a loop in which the pendant is hanging. Working to the right, take the leather tail and skipping one chain link enter the next link from top to bottom. Next, slip through the front of the Swarovski Queen Baguette Pendant article 6465 13.5x6mm Crystal Bermuda Blue, slip the leather through the same chain link to form a loop in which the pendant is hanging.

*Continuation on next page*

*Deep Blue Queen Necklace, page 2*

- Step 4: Working to the right and in the same manner as step 3, you will continue to add the pendants in the following order: (1) Swarovski Queen Baguette Pendant article 6465 25x7mm Crystal Bermuda Blue, (1) Swarovski Queen Baguette Pendant article 6465 13.5x6mm Crystal Bermuda Blue, (1) Swarovski Queen Baguette Pendant article 6465 25x7mm Crystal Bermuda Blue, (1) Swarovski Queen Baguette Pendant article 6465 13.5x6mm Crystal Bermuda Blue, (1) Swarovski Queen Baguette Pendant article 6465 25x7mm Crystal Bermuda Blue, (1) Swarovski Queen Baguette Pendant article 6465 13.5x6mm Crystal Bermuda Blue, (2) Swarovski Queen Baguette Pendant article 6465 13.5x6mm Crystal Bermuda Blue. After the last pendant is hung, take the leather skip one link and enter the next link from the top to bottom. Make an overhand knot up next to the chain link. Trim as desired.
- Step 5: Now you will begin to work the left side of the necklace from the center out to the left. Repeat in the same manner as the right side adding the pendants in the following order;
- Swarovski Queen Baguette Pendant article 6465 13.5x6mm Crystal Bermuda Blue, (1) Swarovski Queen Baguette Pendant article 6465 25x7mm Crystal Bermuda Blue, (1) Swarovski Queen Baguette Pendant article 6465 13.5x6mm Crystal Bermuda Blue, (1) Swarovski Queen Baguette Pendant article 6465 25x7mm Crystal Bermuda Blue, (1) Swarovski Queen Baguette Pendant article 6465 13.5x6mm Crystal Bermuda Blue, (1) Swarovski Queen Baguette Pendant article 6465 25x7mm Crystal Bermuda Blue, (3) Swarovski Queen Baguette Pendant article 6465 13.5x6mm Crystal Bermuda Blue.
- Step 6: After the last pendant is hung, take the leather skip one link and enter the next link from the top to bottom. Make an overhand knot up next to the chain link. Trim as desired.



Project designs for the Classic Trend – The Art of Expression  
DEEP BLUE QUEEN NECKLACE

CREATE  
YOUR STYLE



SWAROVSKI

PROJECT DESIGNS FOR THE CLASSIC TREND  
– THE ART OF EXPRESSION

## DEEP BLUE QUEEN EARRINGS

### Materials

Swarovski crystals

Product Group	Article No.	Amount	Size	Color	Color Code
Pendant – Queen Baguette	6465	2 pcs	25x7mm	Crystal Bermuda Blue P	001 BBL
Beads – Xilion Bicone	5328	2 pcs	4mm	Capri Blue	243

Supplies:

- 1 pr – Black Earring Blank
- 1" – Brass Rolo 4.5mm chain
- 2pc – Medium oval jump rings
- 10" – 1mm Black Leather cord

### Instructions

- Step 1: Using one earring wire, slip on (1) Swarovski article 5328 4mm Capri Blue and create a simple loop. Repeat for second pair.
- Step 2: Split the chain into two equal pieces.
- Step 3: Using one piece of chain from step 2, attach (1) Swarovski Queen Baguette Pendant article 6465 25x7mm Crystal Bermuda Blue using one medium oval jump ring. Repeat for second side.
- Step 4: Cut the leather in half. Using one piece of leather, loop into the second chain link from the pendant and make an overhand knot in the leather. The loop should approximate the length from the necklace. Trim as desired. Repeat for the second side.
- Step 5: Attach the earring wires made in step 1 to the top of the chain. Repeat for the second earring.



PROJECT DESIGNS FOR THE CLASSIC TREND  
– THE ART OF EXPRESSION

## TWO OF HEARTS CUFF BRACELET

### Materials

Swarovski crystals

Product Group	Article No.	Amount	Size	Color	Color Code
Sew on stone – heart	3259	22 pcs	12mm	Crystal Lilac Shadow F	001- LISH
BeCharmed Pave Slim	81101	1 pc	13.5mm	Crystal Lilac Shadow	001-LISH

Supplies:

- 1pr – Small 3-hole D Ring Clasp set in gold
- 12pc – Small gold oval jump ring
- 2pc – Medium gold oval jump rings
- 2pc – 8mm gold round jump rings
- 3ft – 24g Non-tarnish gold plated wire

### Instructions

- Step 1: Cut the 24g wire into two equal pieces.
- Step 2: Using one piece of wire, thread through one hole of (1) Swarovski Sew-on Heart article 3259 12mm Crystal Lilac Shadow from front to back, leaving a four inch tail. Using the longer side of wire, thread through the second hole of the Swarovski Sew-on Heart article 3259 12mm Crystal Lilac Shadow from the back to front. Repeat this step 10 more times keeping the hearts in the same direction and almost touching side by side. Set aside. Note: be careful not to overwork the wire or it may snap.
- Step 3: Repeat step 2 once.
- Step 4: Using the bead unit made in step 2, wire-wrap a loop to one end to the outer hole of one D Ring Clasp set. Note: the point of the hearts should face away from the clasp (see photo). Repeat for the opposite end of the heart unit using the second D Ring Clasp and wire wrapping into the corresponding hole.
- Step 5: Repeat step 4 using the heart unit made in step 3. Wire-wrap a loop to the opposite outer hole of each D Ring Clasp. Note: the lobes of the heart should now be almost touching each other and each row of two hearts should line up.
- Step 6: Attach three linked small oval jump rings to the wire on each heart unit (beginning left to right) between heart #1 and heart #2, heart #4 and heart #5, heart #7 and heart #8, and lastly between heart #10 and heart #11.
- Step 7: Using one medium oval jump ring attach to one D Ring Clasp on one side and attach to the bar closure.
- Step 8: Attach both 8mm round jump rings to (1) Swarovski BeCharmed Pave Slim bead article 81 101 13.5mm Crystal Lilac Shadow. Attach one medium oval jump ring to both 8mm round jump rings and to one wire-wrapped loop on the opposite D Ring Clasp to the one from step 7.

CREATE  
YOUR STYLE

SWAROVSKI

PROJECT DESIGNS FOR THE CLASSIC TREND  
– THE ART OF EXPRESSION

# ROYAL SUNSET NECKLACE



## Materials

Swarovski crystals

Product Group	Article No.	Amount	Size	Color	Color Code
Pendants – Sun	6724	15 pcs	19mm	Crystal Heliotrope P	001 HEL

Supplies:

- 1 pr – Toggle Clasp
- 6pc – TierraCast® 94-3112-25 1.25" Radiant Ring
- 5pc – TierraCast® 94-3087-25 Large Hammertone Ring
- 80pc – 8mm Round jump ring
- 27pc – Medium Oval jump ring

## Instructions

- Step 1: Working in sets of two, attach two 8mm jump rings together to create a chain with 16 links long (32 rings total). Repeat this step once. Set aside.
- Step 2: Attach one medium oval jump ring to (1) Swarovski Sun Pendant article 6724 19mm Crystal Heliotrope P. Attach two more oval jump rings off the first jump ring to form a chain link. Attach one large Hammertone ring to the last jump ring on the chain link. Repeat this step four more times. Set aside.
- Step 3: Using your metal hole punch (1.8mm) punch a hole on the rim of a 1.25" Radiant ring. Using this same ring, punch a second hole on the exact opposite side of the first. Note: the holes should be in the 12 o'clock and 6 o'clock positions on the ring. Repeat this step 3 times more. Set aside.
- Step 4: Using your metal hole punch (1.8mm) punch a hole on the rim of a 1.25" Radiant ring. Using this same ring punch one more hole approximately  $\frac{3}{8}$ " from the first hole. Repeat this step once. Note: These two rings are your end rings of the necklace. Set aside.
- Step 5: Place one ring from step 3, with the second hole facing left, on a flat surface. Next, place the four rings made in step 2 to the right of this end ring with the holes in a vertical positive. Last, place the second end ring made in step 3 to the right of the 5 rings previously laid out with the second hole of the ring facing right. Leave the rings in order for easy placement.
- Step 6: Using one 8mm jump ring attach the rings together in the order of placement from step 4. Note: the Radiant rings will move around while you are attaching them, so when done lay them on a flat surface and line up the holes according to the placement in step 4.

*Continuation on next page*

*Royal Sunset Necklace, page 2*

- Step 7: Attach 1 8mm round jump ring to the Hammertone ring bead unit from step 2. Repeat with a second jump ring. Note: these two 8mm jump rings will move around the Hammertone ring. Repeat this step for the four remaining bead units. Set aside.
- Step 8: Next you will add the bead units made in step 7 moving from left to right. Open the left 8mm round jump ring on the bead unit from step 7 and attach to the left Radiant Ring end from step 6. Open the right 8mm round jump ring from the same bead unit and attach to the second Radiant ring. Repeat this step across the 6 Radiant rings. Note: Positioning the in-progress piece flat, you will see five Hammertone rings nestled between the six Radiant rings. (See picture for placement)
- Step 9: Using one medium oval jump ring attach (1) Swarovski Sun Pendant article 6724 19mm Crystal Heliotrope P (beginning with the Radiant end ring on the left side) to the hole in the 12 o'clock position. Repeat this step for the remaining 5 Radiant rings.
- Step 10: Using one medium oval jump ring attach (1) Swarovski Sun Pendant article 6724 19mm Crystal Heliotrope P (on each of the middle four Radiant rings) to the hole in the 6 o'clock position. Note: All Sun Pendants should be attached.
- Step 11: Attach one medium oval jump ring to the remaining hole on the left Radiant ring end. With the jump ring open, attach one chain unit made in step 1. Repeat this step for the opposite side.
- Step 12: Open the last two jump rings on one side of the chain unit and attach to one half of the Artisan Clasp set. Repeat for the second side.



Project designs for the Classic Trend – The Art of Expression  
ROYAL SUNSET NECKLACE

CREATE  
YOUR STYLE

SWAROVSKI

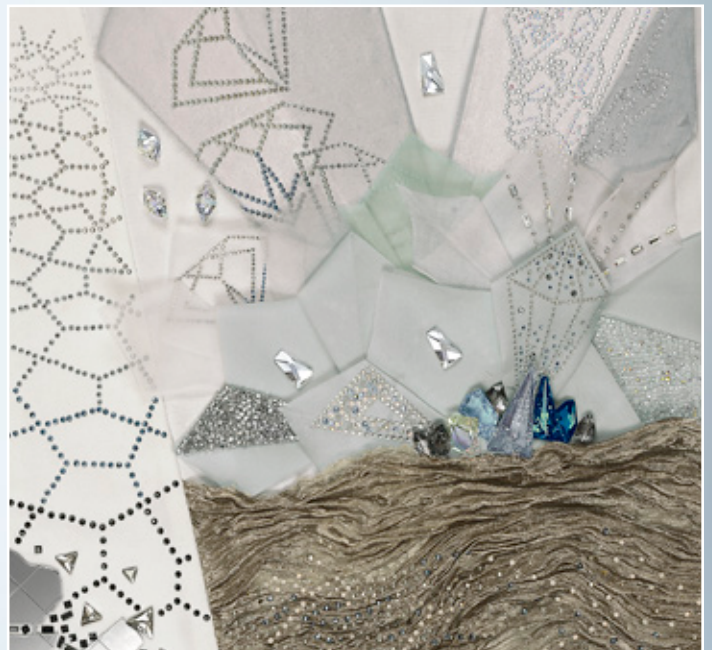
# PROGRESSIVE TREND

## THE STILLNESS WITHIN

Jewelry makes a statement with strong, clean silhouettes and minimal embellishment. Bold simplicity balanced with organic irregularity form a refined, sophisticated aesthetic. An almost weightless transparency is combined with metal structuring and crystal settings. Smooth, highly polished metal surfaces merge with fluid forms to create a futuristic effect. Symmetrical, geometrical forms are balanced with crystal constructions resembling gemological growth structures.

### Color concept:

Beautiful blurred blues and foggy gray tones create a softly surreal palette that soothes and pacifies the senses, utilizing the interplay of soft winter light.



CREATE  
YOUR STYLE



SWAROVSKI

PROJECT DESIGNS FOR THE PROGRESSIVE  
TREND – THE STILLNESS WITHIN

# SMOKE FOLLOWS BEAUTY NECKLACE

## Materials

Swarovski crystals

Product Group	Article No.	Amount	Size	Color	Color Code
Beads	5000	16 pcs	6mm	Cyclamen opal	398
Beads	5000	12 pcs	8mm	Cyclamen opal	398
Beads	5328	15 pcs	4mm	Smoky Mauve	265
Beads	5328	26 pcs	4mm	Crystal Silver Night	001 SINI
Beads	5328	2 pcs	6mm	Crystal Silver Night	001 SINI
Beads	5748	16 pcs	12mm	Smoky Mauve	265
Beads	5541	4 pcs	15mm	Smoky Mauve	265
BeCharmed Bead	80501	3 pcs	15.5mm	Crystal Chrome	001 19
Crystal Pearl	5810	14 pcs	6mm	Crystal Light Grey	001 616
Crystal Pearl	5810	4 pcs	8mm	Crystal Light Grey	001 616
Crystal Pearl	5821	8 pcs	11x8 m	Crystal Light Grey	001 616
Pendants	6428	20 pc	8mm	Smoky Mauve	265

Supplies:

- 1 – Toggle set
- 2 – Braided 3x1 link connector
- 6 – Bead stoppers
- 2 – 6mm round jump rings
- 4 – 3mm crimp covers
- 4 – 2x2 crimp beads
- 42" – .018 beading wire

*Continuation on next page*

*Smoke Follows Beauty Necklace, page 2*

## Instructions

- Step 1: Using the beading wire cut into two pieces. One at 20" and one at 22". Set aside
- Step 2: Using the 20" piece of wire and one of the braided 3x1 links attach the beading wire to hole #1 with a crimp bead and cover with crimp cover.
- Step 3: Slide on one bead 5328 4mm Crystal Silver Night, one bead 5000 6mm Cyclamen Opal, one crystal pearl 5810 6mm Lt Grey. Then begin the following pattern: slide on three beads 5328 4mm Smoky Mauve, one crystal pearl 5810 6mm Lt Grey, one bead 5000 6mm Cyclamen Opal, one bead 5000 8mm Cyclamen Opal, one bead 5328 4mm Crystal Silver Night, one crystal pearl 5821 11x8mm Lt Grey, five pendants 6428 8mm Smoky Mauve, one crystal pearl 5821 11x8mm Lt Grey, one bead 5328 4mm Crystal Silver Night, one bead 5000 8mm Cyclamen Opal, one bead 5000 6mm Cyclamen Opal, and one crystal pearl 5810 6mm Lt Grey. Repeat this pattern 3 more times. Slide on three beads 5328 4mm Smoky Mauve, one crystal pearl 5810 6mm Lt Grey, one bead 5000 6mm Cyclamen Opal, and one bead 5328 4mm Crystal Silver Night
- Step 4: Using the other braided 3x1 link attach the beading wire to hole #1 with a crimp bead and cover with crimp cover.
- Step 5: Using the 22" piece of wire and one of the braided 3x1 links attach the beading wire to hole #3 with a crimp bead and cover with crimp cover.
- Step 6: Slide on two beads 5328 4mm Crystal Silver Night, one bead 5748 12mm Smoky Mauve, one bead 5328 4mm Crystal Silver Night, bead 5748 12mm Smoky Mauve, one bead 5328 4mm Crystal Silver Night, one bead 5748 12mm Smoky Mauve, one bead 5328 4mm Crystal Silver Night, one bead 5748 12mm Smoky Mauve, one bead 5328 4mm Crystal Silver Night, one bead 5748 12mm Smoky Mauve, one crystal pearl 5810 6mm Lt Grey, one bead 5000 8mm Cyclamen Opal, one crystal pearl 5810 8mm Lt Grey, one bead 5541 15mm Smoky Mauve, one bead 5000 6mm Cyclamen Opal, one bead stopper, one BeCharmed Bead 80501 15.5mm Crystal Chrome, one bead stopper, one bead 5000 6mm Cyclamen Opal, one bead 5541 15mm Smoky Mauve, one crystal pearl 5810 8mm Lt Grey, one bead 5000 8mm Cyclamen Opal, one crystal pearl 5810 6mm Lt Grey, one bead 5748 12mm Smoky Mauve, one bead 5328 4mm Crystal Silver Night, one bead 5748 12mm Smoky Mauve, one bead 5328 6mm Crystal Silver Night, one bead 5000 6mm Cyclamen Opal, one bead stopper, one BeCharmed Bead 80501 15.5mm Crystal Chrome, one bead stopper. Now reverse the complete pattern to finish.
- Step 7: Using the other braided 3x1 link attach the beading wire to hole #3 with a crimp bead and cover with crimp cover.
- Step 8: Using the round jump rings attach each end of the toggle to the braided links.



Project designs for the Progressive Trend – The Stillness Within  
SMOKE FOLLOWS BEAUTY NECKLACE

CREATE  
YOUR STYLE



SWAROVSKI

PROJECT DESIGNS FOR THE PROGRESSIVE  
TREND – THE STILLNESS WITHIN

# SHINING CHARMS IN PARADISE BRACELET

## Materials

Swarovski crystals

Product Group	Article No.	Amount	Size	Color	Color Code
Pendants	6010	8 pcs	13x6.5mm	Crystal Paradise Shine	001 PARSH
Pendants	6465	8 pcs	13.5x6mm	Crystal Paradise Shine	001 PARSH
Pendants	6764	3 pcs	19 mm	Crystal Paradise Shine	001 PARSH
Beads	5028/4	8 pcs	8mm	Crystal Paradise Shine	001 PARSH
Beads	5040	4 pcs	6mm	Erinite	360
Beads	5040	4 pcs	8mm	Erinite	360
Beads	5040	4 pcs	8mm	Violet	371
Beads	5054	4 pcs	8mm	Crystal Paradise Shine	001 PARSH
Beads	5328	8 pcs	3mm	Chrysolite	238
Beads	5328	4 pcs	6mm	Chrysolite	238
Beads	5328	20 pcs	4mm	Crystal Paradise Shine 2X	001 PARSH2
Crystal Pearls	5810	20 pcs	3mm	Crystal Iridescent Purple	001 943
Crystal Pearls	5810	8 pcs	4mm	Crystal Iridescent Purple	001 943
Crystal Pearls	5810	4 pcs	8mm	Crystal Iridescent Purple	001 943
Sew-ons	3188	16 pcs	5mm	Crystal Paradise Shine	001 PARSH

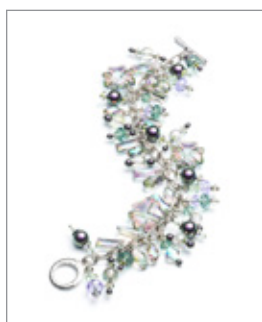
Supplies:

- 1 pr – Silver toggle Set
- 24 – 2" silver head Pins
- 21 – 6mm silver oval jump rings
- 7" – 8x5mm brass cable chain

*Continuation on next page*

## Instructions

- Step 1: Using one jump ring attach to one pendant 6010 13x6.5mm Crystal Paradise Shine. Repeat 7 more times and set aside.
- Step 2: Using one jump ring attach to one pendant 6465 13.5x6mm Crystal Paradise Shine. Repeat 7 more times and set aside.
- Step 3: Using one jump ring attach to one pendant 6764 19mm Crystal Paradise Shine. Repeat 2 more times.
- Step 4: Using a head pin slide on one bead 5328 3mm Chrysolite, one sew-on 3188 5mm Crystal Paradise Shine, one crystal pearl 5810 8mm Crystal Iridescent Purple, one sew-on 3188 5mm Crystal Paradise Shine, and one bead 5328 3mm Chrysolite. Make a simple loop. Repeat 3 more times and set aside.
- Step 5: Using a head pin slide on one bead 5328 4mm Crystal Paradise Shine 2X, one bead 5328 6mm Chrysolite, one bead 5040 8mm Violet, and one bead 5328 4mm Crystal Paradise Shine 2X. Make a simple loop. Repeat 3 more times and set aside.
- Step 6: Using a head pin slide on one pearl 3mm Crystal Iridescent Purple, one bead 5328 4mm Crystal Paradise Shine 2X, one bead 5028/4 8mm Crystal Paradise Shine, one bead 5328 4mm Crystal Paradise Shine 2X, and one pearl 3mm Crystal Iridescent Purple. Make a simple loop. Repeat 3 more times and set aside.
- Step 7: Using a head pin slide on one pearl 3mm Crystal Iridescent Purple, one sew-on 3188 5mm Crystal Paradise Shine, one bead 5040 8mm Erinite, one sew-on 3188 5mm Crystal Paradise Shine, and one pearl 3mm Crystal Iridescent Purple. Make a simple loop. Repeat 3 more times and set aside.
- Step 8: Using a head pin slide on one pearl 4mm Crystal Iridescent Purple, one bead 5028/4 8mm Crystal Paradise Shine, and one pearl 4mm Crystal Iridescent Purple. Make a simple loop. Repeat 3 more times and set aside.
- Step 9: Using a head pin slide on one pearl 3mm Crystal Iridescent Purple, one bead 5054 8mm Crystal Paradise Shine, one bead 5040 6mm Erinite, and one bead 5328 4mm Crystal Paradise Shine 2X. Make a simple loop. Repeat 3 more times and set aside.
- Step 10: Using jump rings attach the two pieces of the toggle to both ends of the chain.
- Step 11: Using all of the components made in Steps 1 – Steps 9 randomly attach to the chain.



Project designs for the Progressive Trend – The Stillness Within  
SHINING CHARMS IN PARADISE BRACELET

CREATE  
YOUR STYLE



SWAROVSKI

PROJECT DESIGNS FOR THE PROGRESSIVE  
TREND – THE STILLNESS WITHIN

## SUN SHOWER EARRINGS

### Materials

Swarovski crystals

Product Group	Article No.	Amount	Size	Color	Color Code
Beads	5000	2 pcs	4mm	Crystal	001
Pendants	6724/G	10 pcs	12mm	Crystal	001

Supplies:

- 1 pr – Add-a-Bead Ear wires in brass
- 2 – 9 Hole End Bars in brass
- 36 – 6mm brass Oval jump Rings
- 18" – Brass Cable Chain 2x3mm

### Instructions

- Step 1: Using the chain cut it in the following lengths: four 1" pieces, four 2" pieces and two 3" pieces. Set aside
- Step 2: Using one jump ring attach it to one pendant 6724/G 12mm Crystal. Repeat 9 times and set aside.
- Step 3: Using one 9 Hole End Bar attach a jump ring to each hole. Now take the first two jump rings in Holes #1 & #2 and attach together with another jump ring. Repeat this for holes #3 & #4, #6 & #7, and #8 & #9.
- Step 4: Using one pendant from Step 2 attach to a 1" piece of chain and then attach this chain to the link coming from holes #1 & #2 of the bar.
- Step 5: Using one pendant from Step 2 attach to a 2" piece of chain and then attach this chain to the link coming from holes #3 & #4 of the bar.
- Step 6: Using one pendant from Step 2 attach to a 3" piece of chain and then attach this chain to the link coming from hole #5 of the bar.
- Step 7: Using one pendant from Step 2 attach to a 2" piece of chain and then attach this chain to the link coming from holes #6 & #7 of the bar.
- Step 8: Using one pendant from Step 2 attach to a 1" piece of chain and then attach this chain to the link coming from holes #8 & #9 of the bar.
- Step 9: Using one bead 5000 4mm Crystal slide onto one Add a Bead Wire and make a simple loop. Attach this ear wire to the top of the bar.
- Step 10: Repeat Steps 3 – 9 for second earring.

CREATE  
YOUR STYLE

SWAROVSKI

# ROMANTIC

## THE SEDUCTION OF TOUCH

Crystal forms the central, precious element of the design with metal structures serving as the setting from which it can shine. Stacked, repeated crystals give a feeling of closeness as they merge to form the visual effect of a single entity. A sense of comfort is ensured through the use of fluid and smooth shapes with soft edges, adding to a heightened simplicity.

### Color concept:

Monochrome tones and muted neutrals in gray and brown are made more feminine with lilac and pale pink, often punctuated by bold colors.



CREATE  
YOUR STYLE

SWAROVSKI

PROJECT DESIGNS FOR THE ROMANTIC TREND  
– THE SEDUCTION OF TOUCH

# VICTORIAN PATINA PENDANT NECKLACE



## Materials

Swarovski crystals

Product Group	Article No.	Amount	Size	Color
Beads	5000	8 pcs	6mm	Crystal Rose Gold (001 ROGL)
Beads	5000	8 pcs	8mm	Crystal Rose Gold (001 ROGL)
Beads	5328	16 pcs	4mm	Crystal Rose Gold 2X (001 ROGL2)
Beads	5328	16 pcs	6mm	Crystal Rose Gold 2X (001 ROGL2)
Fancy Stone	4327	1 pc	30x20mm	Crystal Rose Patina F (001 ROSPA)

## Supplies:

- 1 pc – Pear Bezel in Copper Finish
- 6 pc – Small Hammertone Link TierraCast® 94-3085-18
- 1 set – Copper Hook and Eye
- 24" – 20 Gauge Copper Wire

## Instructions

- Step 1: Using the Pear Bezel from the front side bend down all the prongs towards the center. Using one fancy stone art 4327 30x20mm Crystal Rose Patina place into the setting with the front of the stone against the already bent prongs. Now bend all the prongs on the back side against the foil back to the stone. Set aside
- Step 2: Cut the wire into 16 – 1 ½" pieces and set aside.
- Step 3: Using one wire make a simple loop at one end and slide on one bead art 5328 4mm Crystal Rose Gold 2X, one bead art 5000 6mm Crystal Rose Gold, and one bead art 5328 4mm Crystal Rose Gold 2X. Make a simple loop to close and set aside. Repeat this step 7 more times.
- Step 4: Using one wire make a simple loop at one end and slide on one bead art 5328 6mm Crystal Rose Gold 2X, one bead art 5000 8mm Crystal Rose Gold, and one bead art 5328 6mm Crystal Rose Gold 2X. Make a simple loop to close and set aside. Repeat this step 7 more times.
- Step 5: To create necklace begin attaching one link from Step 3 to the top of the pendant. Then attach a link made in Step 4 to first link. Now attach the end to a small hammertone link. Now attach a link from Step 4, then a link from Step 3, then attach to a small hamertone link. Repeat pattern once until you reach the last crystal link. Attach one end of the hook and eye clasp.
- Step 6: Repeat Step 5 to complete the other side of the necklace.

CREATE  
YOUR STYLE

SWAROVSKI



PROJECT DESIGNS FOR THE ROMANTIC TREND  
— THE SEDUCTION OF TOUCH

## TIERED SPIKELETS NECKLACE

### Materials

Swarovski crystals

Product Group	Article No.	Amount	Size	Color
Pendants	6106	7	28mm	Crystal Gold Patina (001 GOLPA)
Double Spike Beads	5747	11	16x8mm	Crystal Metallic Light Gold 2x (001 MLG2)
Double Spike Beads	5747	14	12x6mm	Crystal Metallic Light Gold 2x (001 MLG2)

Supplies:

- 16 inches — 10" Round Brass Cable chain
- 14 pc — 16g brass jump ring
- 1 pc — Classic S Hook in brass
- 2 feet — 20g antique brass Wire

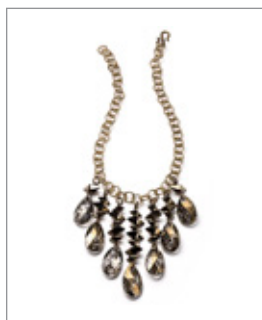
### Instructions

- Step 1: Attach (1) 16g jump ring to each of the 7 28mm Pendants Art. 6106 in Crystal Gold Patina. Set aside.
- Step 2: Using the 20g antique brass wire, make a simple loop and slip on (1) 16x8mm Double Spike Bead Art. 5747 in Crystal Metallic Light Gold 2x, make a simple loop. Repeat this step once more.
- Step 3: Using the 20g antique brass wire, make a simple loop and slip on (1) 12x6mm Double Spike Bead Art. 5747 in Crystal Metallic Light Gold 2x, (1) 16x8mm Double Spike Bead Art. 5747 in Crystal Metallic Light Gold 2x, (1) 12x6mm Double Spike Bead Art. 5747 in Crystal Metallic Light Gold 2x and make a simple loop. Repeat this step once more.
- Step 4: Using the 20g antique brass wire, make a simple loop and slip on (1) 12x6mm Double Spike Bead Art. 5747 in Crystal Metallic Light Gold 2x, (1) 16x8mm Double Spike Bead Art. 5747 in Crystal Metallic Light Gold 2x, (1) 12x6mm Double Spike Bead Art. 5747 in Crystal Metallic Light Gold 2x, (1) 16x8mm Double Spike Bead Art. 5747 in Crystal Metallic Light Gold 2x, (1) 12x6mm Double Spike Bead Art. 5747 in Crystal Metallic Light Gold 2x and make a simple loop. Repeat this step once more.

*Continuation on next page*

*Tiered Spikelets Necklace, page 2*

- Step 5: Using the 20g antique brass wire, make a simple loop and slip on (1) 12x6mm Double Spike Bead Art. 5747 in Crystal Metallic Light Gold 2x, (1) 16x8mm Double Spike Bead Art. 5747 in Crystal Metallic Light Gold 2x, (1) 12x6mm Double Spike Bead Art. 5747 in Crystal Metallic Light Gold 2x, (1) 16x8mm Double Spike Bead Art. 5747 in Crystal Metallic Light Gold 2x, (1) 12x6mm Double Spike Bead Art. 5747 in Crystal Metallic Light Gold 2x, (1) 16x8mm Double Spike Bead Art. 5747 in Crystal Metallic Light Gold 2x, (1) 12x6mm Double Spike Bead Art. 5747 in Crystal Metallic Light Gold 2x and make a simple loop.
- Step 6: Attach each of the seven units made in steps 3 – 6 to each of the seven units made in step 1.
- Step 7: Attach (1) each 16g jump ring to the simple loops made on the opposite side of the Pendants for each of the seven units.  
*Note: Keep the coatings in the same direction on all seven pendants when performing the next step.*
- Step 8: Using the unit made in step 5, attach it to the center link of the 10mm Round Brass chain.  
*Note: make sure to keep the chain facing the same direction for the next step.*
- Step 9: Using every other link from the center, attach (1) unit made in step 4 to the right of the center unit. Repeat for the left side.
- Step 10: Using every other link from the last attached unit, attach (1) unit made in step 3 to the right of the last unit added. Repeat for the left side.
- Step 11: Using every other link from the last attached unit, attach (1) unit made in step 2 to the right of the last unit added. Repeat for the left side.
- Step 12: Attach the Classic S Hook to one side of the chain. Squeeze closed the side of the hook that is attached to the chain and gently open the opposite side of the hook, which will be used to attach to the opposite end of the chain for closure.



Project designs for the Romantic Trend – The Seduction of Touch  
TIERED SPIKELETS NECKLACE

CREATE  
YOUR STYLE

SWAROVSKI

PROJECT DESIGNS FOR THE ROMANTIC TREND  
— THE SEDUCTION OF TOUCH

# GOLDEN ARROW NECKLACE



## Materials

Swarovski crystals

Product Group	Article No.	Amount	Size	Color	Color Code
Beads – Arrow	5748	5 pcs	12mm	Crystal Metallic Light Gold 2x	001-MLG2
Beads – Arrow	5748	5 pcs	16mm	Crystal Metallic Light Gold 2x	001-MLG2
Beads – Double Spike Bead	5747	9 pcs	12x6mm	Crystal Metallic Light Gold 2x	001-MLG2
Beads – Double Spike Bead	5747	6 pcs	16x8mm	Crystal Metallic Light Gold 2x	001-MLG2

## Supplies:

- 2pc – TierraCast® 94-3101-27 Drilled Hammertone Oval
- 1pc – TierraCast® 94-3088-27 Hammertone Oval
- 1pr – Forged Toggle Set in brass
- 10" – 10mm Round Brass Cable chain
- 10.5" – 9x6mm Embossed Brass Cable chain
- 10" – 6x4mm Brass Cable chain
- 6pc – 3mm Crimp Cover in brass
- 6pc – 2x2mm Crimp Bead
- 18" – 0.015 beading wire

## Instructions

- Step 1: Cut beading wire into 3 pieces; 1 at 7", 2 at 6"
- Step 2: Separate two links off of the 9x6mm Embossed Brass Cable chain; attach one link to one drilled Hammertone oval, repeat once.
- Step 3: Open the link in step 2 and add one end of each of the three lengths of chain, close link. Repeat for the second drilled oval. Set aside.

*Golden Arrow Necklace, page 2*

- Step 4: Using the 7" piece of beading wire, crimp to one side using the open hole of the Drilled Hammertone oval from step 3. Slip on (1) Swarovski Article 5747 12x6mm Crystal Metallic Light Gold 2x Double Spike bead, and (1) Swarovski Article 5747 16x8mm Crystal Metallic Light Gold 2x Double Spike bead. Repeat 5 times more. Slip on (3) Swarovski Article 5747 12x6mm Crystal Metallic Light Gold 2x Double Spike bead and crimp to the bar end of the Forged Toggle set. Add crimp covers if desired.
- Step 5: Using one 6" piece of beading wire, crimp to the second hole of the remaining Drilled Hammertone oval from step 3. Slip on (5) Swarovski Article 5748 16mm Crystal Metallic Light Gold 2x Arrow bead with the pointed end of each bead facing the Drilled Hammertone link. Crimp onto the narrow end of the Hammertone Oval. Add crimp covers if desired.
- Step 6: Using the second 6" piece of beading wire, crimp to the opposite narrow end of the Hammertone Oval. Slip on (5) Swarovski Article 5748 12mm Crystal Metallic Light Gold 2x Arrow bead with the pointed end facing away from the Hammertone Oval. Crimp to the ring end of the Forged Toggle set. Add crimp covers if desired.



Project designs for the Romantic Trend – The Seduction of Touch  
GOLDEN ARROW NECKLACE

CREATE  
YOUR STYLE

SWAROVSKI



PROJECT DESIGNS FOR THE ROMANTIC TREND  
– THE SEDUCTION OF TOUCH

# LETHAL WEAPON RING

## Materials

Swarovski crystals

Product Group	Article No.	Amount	Size	Color	Color Code
Pave Thread Ring	85-001 1 hole	1 pc	16.5mm	Crystal Golden Shadow	001-GSHA
Pendant – Spike	6480	1 pc	18mm	Crystal Golden Shadow	001-GSHA

Supplies:

- 1ft – 24g non-tarnishing silver plate wire
- 1pc – Size 11/0 seed bead (borrow from your favorite bead-weaver)

## Instructions

- Step 1: Gently bend the wire in half and slip on one size 11/0 seed bead.
- Step 2: Keeping the wire tails together, slip into the hole (from inside to outside) of (1) Swarovski Pave Thread Ring article 85-001 16.5mm Crystal Golden Shadow.
- Step 3: Thread each wire tail in opposite directions through (1) Swarovski Spike Pendant article 6480 18mm Crystal Golden Shadow.
- Step 4: While keeping the Spike Pendant flat against the Pave Thread Ring, use one wire tail and wrap around the bottom of the pendant towards the Pave Thread Ring. Trim wire and tuck the tail.
- Step 5: Repeat with the second tail wrapping in the opposite direction from step 4, wrap around the bottom of the pendant towards the Pave Thread Ring. Trim wire, and tuck the tail.

CREATE  
YOUR STYLE

SWAROVSKI

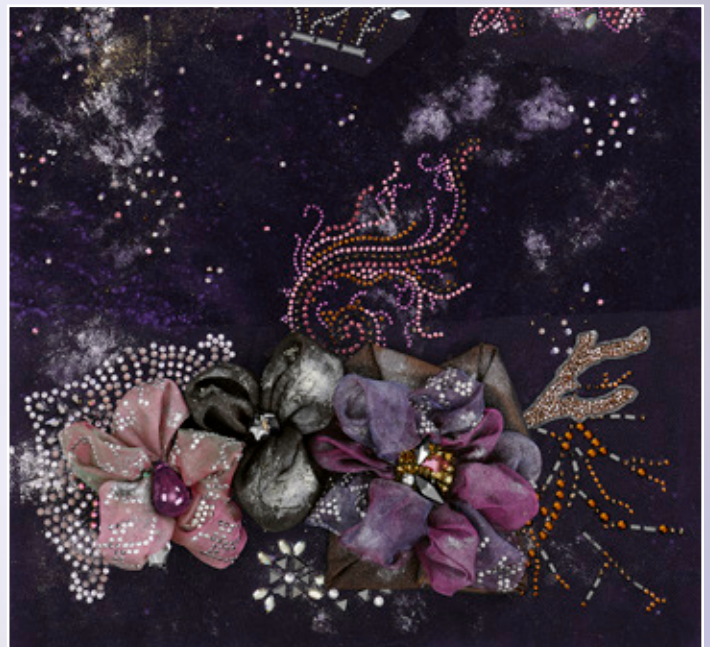
# GLAMOUR

## THE DARKNESS OF DESIRE

A variety of antique-style materials and patina-effect surfaces are combined with shimmering crystal to form ornate jewelry with a sense of vintage glamour. Organic, layered shapes merge to create opulent ornamentation. Jewelry emulates natural growth structures with tiny intricacies and organic irregularities. Spontaneous compositions evoke an impression of ethereal whimsy. Rich, ornamental detailing with botanical inspiration is set with subtle crystal pavé to create elaborate, luxurious designs.

### Color concept:

The extreme depth of colors – velvet purples and deep browns, offer a dark smudged and blurred color palette, highlighted by iridescent radiance.



CREATE  
YOUR STYLE

SWAROVSKI

PROJECT DESIGNS FOR THE GLAMOUR TREND –  
THE DARKNESS OF DESIRE

# RADIANCE DROP NECKLACE



## Materials

Swarovski crystals

Product Group	Article No.	Amount	Size	Color	Color Code
Pave Thread Ring	85001	2 pc	16.5mm	Dark Moss Green	260
Pave Thread Ring	85001	1 pc	18.5mm	Dark Moss Green	260
Crystal Pearl	5810	52 pcs	8mm	Crystal Iridescent Purple	001 943
Crystal Pearl	5811	3 pcs	14mm	Crystal Iridescent Purple	001 943
Pendants	6010	15 pcs	13x6.5mm	Crystal Paradise Shine	001 PARSH

## Supplies:

- 1 pr – Silver Toggle Set
- 6 – 2" silver head pins
- 27 – 6mm silver oval jump rings
- 4 – 2x2mm silver crimp beads
- 4 – 3mm silver crimp bead covers
- 20" – 0.018 beading wire

## Instructions

- Step 1: Using one pendant 6010 13x6.5mm Crystal Paradise Shine attach one oval jump ring, then attach one more jump ring to the attached jump ring creating a link. Repeat 11 more times and set aside.
- Step 2: Using one head pin and one Pave Thread Ring, slide the head pin through the inside bottom hole of the ring and make a simple loop on the outside of the ring. Open the simple loop and slide on one pendant 6010 13x6.5mm Crystal Paradise Shine and close loop. Using a second head pin slide on one pearl 5811 14mm Crystal Iridescent Purple and slide the head pin through the inside top of the Ring making a simple loop. Repeat 2 more time and set aside.
- Step 3: Using beading wire and crimp bead, crimp one end of the wire to one end of the toggle and cover with crimp cover.

*Continuation on next page*

*Radiance Drop Necklace, page 2*

- Step 4: Slide on twelve crystal pearls 5810 8mm Crystal Iridescent Purple, one link made in Step 1 and two crystal pearls 5810 8mm Crystal Iridescent Purple, one link made in Step 1 and two crystal pearls 5810 8mm Crystal Iridescent Purple, one link made in Step 1 and two crystal pearls 5810 8mm Crystal Iridescent Purple, one link made in Step 1 and two crystal pearls 5810 8mm Crystal Iridescent Purple, the 16.5mm Pave Ring made in Step 2, two crystal pearls 5810 8mm Crystal Iridescent Purple, one link made in Step 1 and two crystal pearls 5810 8mm Crystal Iridescent Purple, the 18.5mm Pave Ring made in Step 2, two crystal pearls 5810 8mm Crystal Iridescent Purple, one link made in Step 1 and two crystal pearls 5810 8mm Crystal Iridescent Purple, the 16.5mm Pave Ring made in Step 2, two crystal pearls 5810 8mm Crystal Iridescent Purple, one link made in Step 1 and two crystal pearls 5810 8mm Crystal Iridescent Purple, one link made in Step 1 and two crystal pearls 5810 8mm Crystal Iridescent Purple, one link made in Step 1 and two crystal pearls 5810 8mm Crystal Iridescent Purple, one link made in Step 1, two crystal pearls 5810 8mm Crystal Iridescent Purple, one link made in Step 1, and twelve crystal pearls 5810 8mm Crystal Iridescent Purple.
- Step 5: Slide on crimp bead and crimp to second side of Toggle. Cover with crimp cover.



Project designs for the Glamour Trend – The Darkness of Desire  
RADIANCE DROP NECKLACE

CREATE  
YOUR STYLE

SWAROVSKI



PROJECT DESIGNS FOR THE GLAMOUR TREND –  
THE DARKNESS OF DESIRE

## DUE NORTH EARRINGS

### Materials

Swarovski crystals

Product Group	Article No.	Amount	Size	Color	Color Code
Beads – Arrow	5748	2 pcs	12mm	Crystal Golden Shadow	001-GSHA
Pave Thread Ring	85-001 1 hole	2 pcs	18.5mm	Crystal Golden Shadow	001-GSHA
Crystal Pearl	5811	2 pcs	14mm	Petrol Pearl	001-600

Supplies:

- 1 pr – Sterling silver 2mm bead earring wire
- 2pc – 2" 24g Sterling silver head pin

### Instructions

- Step 1: Slip one head pin through (1) Swarovski Crystal Pearl article 5811 14mm Petrol Pearl. Next, slip the head pin through the hole (from inside to outside) of (1) Swarovski Pave Thread Ring article 85-001 18.5mm Crystal Golden Shadow. Next slip (1) Swarovski Arrow bead article 5748 12mm Crystal Golden Shadow onto the head pin with the point of the bead facing towards the end of the head pin. Wire-wrap a loop. Note: keep all beads snug so that the arrow bead sits tight against the pave ring.
- Step 2: Open the ring on one sterling earring wire and attach to the bead unit made in step 1, close ring.
- Step 3: Repeat steps 1 and 2 for the second side.



CREATE  
YOUR STYLE

SWAROVSKI

# ENTER THE CREATE YOUR STYLE DESIGN CONTESTS!

- Use the trend information and design inspirations found within this e-book, along with the newest Swarovski crystal innovations to create your own on-trend designs for all four seasons in 2015.
- Then, be sure to enter them into our design contests for your chance to **win up to \$500.00 in Swarovski crystals!**
- There will be four design contests throughout the year, so be sure to enter all 4 and increase your chances of winning!

---

## The contest themes and schedule is as follows:

- Spring Trend Theme Design Contest: January 1st – February 15th.
  - Summer Trend Theme Design Contest: April 1st – May 15th.
  - Fall Trend Theme Design Contest: July 1st – August 15th.
- Winter Trend Theme Design Contest: October 1st – November 15th.

Please visit: [CREATE-YOUR-STYLE.COM](http://CREATE-YOUR-STYLE.COM) for more information and contest rules.