

SWAROVSKI

CREATE YOUR STYLE



Let It Bead

TABLE OF CONTENTS

BY THE BEAUTIFUL SEA

4 By The Sea Bracelet



Create

6 By The Sea Earrings



Create

MOTHER NATURE

9 Purple Skies in Tuscany



Create

11 Ivy Green



Create

13 Pretty in Pink Jasmine



Create

SYMBOLIC SPIRITUALISM

16 Marrakesh Miracle Necklace



Create

18 Marrakesh Miracle Earrings



Create

20 I Have My Eye on You



Create

22 Namaste at Night



Create

24 Temple Bib of Beauty



Create

26 Temple Drop Earrings



Create

CELEBRATE YOUR FAMILY

29 Birthstone Bracelet



Create

31 Sagittarius Simplicity



Create

COLLEGE LIFE

34 Phi, The Golden Ratio, meets the Jet Set



Create

36 Golden Poseidon



Create

38 Scarlet, Pearls & Pi



Create

40 Silver and Gold Sigma



Create

42 Crystal Girl



Create

OUT ON THE TOWN

45 Midnight Elegance



Create

47 Little Drops of Gold



Create

49 Golden Scarlet Criss Cross



Create

SWAROVSKI

CREATE YOUR STYLE

Let It Bead

BY THE BEAUTIFUL SEA

"By the sea, by the beautiful sea!"

Beautiful, mystical & sparkling, just like crystals from Swarovski® & TierraCast® charms! Incorporate or substitute your favorite seaside colors to create your own one-of-a-kind custom design. Some of our favorites are, Aquamarine, Indicolite, Lt. Turquoise, Lt. Azore, Pacific Opal, White Opal, Crystal Dark Lapis Pearl and Crystal Iridescent Light Blue Pearl & Crystal Iridescent Dark Blue Pearl.



SWAROVSKI

CREATE YOUR STYLE

Let It Bead



BY THE SEA BRACELET



SWAROVSKI

CREATE YOUR STYLE

Let It Bead

BY THE SEA BRACELET



Swarovski Crystals

Product Group	Article No.	Amount	Size	Color	Color Code
Beads	5000	22 pcs	4mm	Majestic Blue	296
Beads	5000	11 pcs	8mm	Majestic Blue	296
Beads	5328	30 pcs	6mm	Light Sapphire Shimmer	211 971
Crystal Pearls	5810	22 pcs	4mm	Crystal Pearlescent White	001 969
Crystal Pearls	5810	32 pcs	6mm	Crystal Pearlescent White	001 969
Crystal Pearls	5810	11 pcs	8mm	Crystal Pearlescent White	001 969

Instructions

STEP 1: Taking one end of the memory wire and make a full turn with pliers to make a closed ring.

STEP 2: Using all the beads and pearls, slide them on to create a desired pattern. Trim the memory wire to 1" and make a full turn with pliers to make a closed ring.

STEP 3: Using one small jump ring attach the seashell charms to each end of the bracelet.

Supplies

- 1 Abalone Charm – TierraCast® 94-2235-12
- 1 Seastar Charm – TierraCast® 94-2232-12
- 1 Shell Charm – TierraCast® 94-2448-12
- 1 Sand Dollar Charm – TierraCast® 94-2449-12
- 4 6mm oval silver jump rings
- 5 coils of Beadalon® Memory Wire silver

SWAROVSKI

CREATE YOUR STYLE

Let It Bead



BY THE SEA EARRINGS



SWAROVSKI

CREATE YOUR STYLE

Let It Bead

BY THE SEA EARRINGS



Swarovski Crystals

Product Group	Article No.	Amount	Size	Color	Color Code
Beads	5000	2 pcs	4mm	Majestic Blue	296
Beads	5000	2 pcs	8mm	Majestic Blue	296
Crystal Pearls	5810	2 pcs	6mm	Crystal Pearlescent White	001 969
Crystal Pearls	5810	2 pcs	10mm	Crystal Pearlescent White	001 969

Instructions

STEP 1: Cut Artistic wire into eight 1" pieces and set aside.

STEP 2: Using one piece of wire make a simple loop at one end slide on one bead and make a simple loop at the other end to close. Repeat 7 more times for all the beads and pearls.

STEP 3: Starting at the bottom, attach one of the seahorse charms to the 4mm Majestic Blue component, attach that to the 6mm pearl component, attach that to the 8mm Majestic Blue component, attach that to the 10mm pearl component and finish with attaching the ear wire. Repeat to make second earring.

Supplies

- 1 Large Spindle Charm – TierraCast® 94-2233-12
- 1 Seahorse Charm – TierraCast® 94-2232-12
- 2 Earwires – TierraCast® 90-1120-10
- 8" 20 gauge silver Artistic Wire®

SWAROVSKI

CREATE YOUR STYLE

Let It Bead

MOTHER NATURE

Swarovski® crystals & crystal pearls together with TierraCast® charms portray the caring and creative side of **Mother Nature!** Use Purple Velvet, Scarlet, Fern Green, Crystal Metallic Sunshine or an endless combination of Swarovski® crystals & crystal pearls to customize these designs and create your own force of nature!



SWAROVSKI

CREATE YOUR STYLE

Let It Bead



PURPLE SKIES
IN TUSCANY

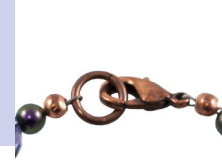
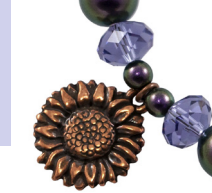


SWAROVSKI

CREATE YOUR STYLE

Let It Bead

PURPLE SKIES IN TUSCANY



Swarovski Crystals

Product Group	Article No.	Amount	Size	Color	Color Code
Beads	5040	12 pcs	8mm	Tanzanite	539
Crystal Pearls	5810	12 pcs	4mm	Crystal Iridescent Purple	001 943
Crystal Pearls	5810	6 pcs	8mm	Crystal Iridescent Purple	001 943

Instructions

STEP 1: Attach one small oval jump ring to each of the five Sunflower charms and set aside.

STEP 2: Using wire slide on one crimp bead and crimp to lobster clasp. Add crimp cover. Slide on beads and sunflower charms to create desired pattern and then add crimp bead and 6mm jump ring and crimp to close. Add crimp cover.

Supplies

- 5 Sunflower Charms – TierraCast® 94 -2034 -18
- 1 Small copper lobster clasp
- 1 6mm round copper jump rings
- 5 4mm oval copper jump rings
- 2 2x2mm crimp beads copper
- 2 3x3mm crimp covers copper
- 10" Beadalon® silver 49 strand beading wire

SWAROVSKI

CREATE YOUR STYLE

Let It Bead



IVY GREEN



SWAROVSKI

CREATE YOUR STYLE

Let It Bead

IVY GREEN



Swarovski Crystals

Product Group	Article No.	Amount	Size	Color	Color Code
Beads	5000	24 pcs	4mm	Yellow opal	231
Crystal Pearls	5810	12 pcs	6mm	Crystal Iridescent Green	001 930

Instructions

STEP 1: Attach one small oval jump ring to each of the eleven Ivy Leaf charms and set aside.

STEP 2: Using wire slide on one crimp bead and crimp to lobster clasp. Add crimp cover. Slide on beads and ivy leaf charms to create desired pattern and then add crimp bead and 6mm jump ring and crimp to close. Add crimp cover.

Supplies

- 11 Ivy Leaf Charms – TierraCast® 94-2010-26
- 1 Small gold lobster clasp
- 1 6mm oval gold jump ring
- 11 4mm oval gold jump rings
- 2 2x2mm crimp beads gold
- 2 3x3mm crimp covers gold
- 10' Beadalon® silver 49 strand beading wire

SWAROVSKI

CREATE YOUR STYLE

Let It Bead



PRETTY IN PINK JASMINE



SWAROVSKI

CREATE YOUR STYLE

Let It Bead

PRETTY IN PINK JASMINE



Swarovski Crystals

Product Group	Article No.	Amount	Size	Color	Color Code
Beads	5040	12 pcs	6mm	Light Rose	223
Beads	5000	6 pcs	8mm	Indian Pink	289
Crystal Pearls	5810	12 pcs	4mm	Crystal Pearlescent White	001 969

Instructions

STEP 1: Attach one small oval jump ring to each of the five Star Jasmine charms and set aside

STEP 2: Using wire slide on one crimp bead and crimp to lobster clasp. Add crimp cover. Slide on beads and star jasmine charms to create desired pattern and then add crimp bead and 6mm jump ring and crimp to close. Add crimp cover.

Supplies

- 5 Star Jasmine Charms – TierraCast® 94-2184-12
- 1 Small silver lobster clasp
- 1 6mm oval silver jump ring
- 5 4mm oval silver jump rings
- 2 2x2mm crimp beads silver
- 2 3x3mm crimp covers silver
- 10' Beadalon® silver 49 strand beading wire

SWAROVSKI

CREATE YOUR STYLE

Let It Bead

SYMBOLIC SPIRITUALISM

Cultivate your spirituality with these jewelry designs created with crystals from Swarovski® and TierraCast® **Spiritual Symbols**. Choose from a wide variety of symbols and crystal colors to create designs that are most meaningful to you. Great for gift-giving and group projects!



SWAROVSKI

CREATE YOUR STYLE

Let It Bead



MARRAKESH MIRACLE NECKLACE



SWAROVSKI

CREATE YOUR STYLE

Let It Bead

MARRAKESH MIRACLE NECKLACE



Swarovski Crystals

Product Group	Article No.	Amount	Size	Color	Color Code
Beads	5000	30 pcs	4mm	Lt Col Topaz Shimmer	246 971
Beads	5000	2 pcs	6mm	Lt Col Topaz Shimmer	246 971
Beads	5000	14 pcs	8mm	Lt Col Topaz Shimmer	246 971
Beads	5000	28 pc	4mm	Erinite Shimmer	360 971
Beads	5000	2 pc	6mm	Erinite Shimmer	360 971
Beads	5000	12 pcs	8mm	Erinite Shimmer	360 971
Beads	5328	13 pc	6mm	Light Turquoise	263
Beads	5328	15 pcs	8mm	Light Turquoise	263

Supplies

- 1 Hamsa Hand Link – TierraCast® 94-3217-26
- 2 Marrakesh Link – TierraCast® 94-3218-26
- 1 Temple Clasp Set – TierraCast® 94-6231-26
- 6 Ethnic Barrel Bead – TierraCast® 94-5529-26
- 7 2" gold headpins
- 6" 20 gauge gold Artistic Wire®
- 30" Beadalon® gold 49 strand beading wire
- 4 2x2mm crimp beads gold
- 4 3x3mm crimp covers gold

Instructions

STEP 1: Cut 20 gauge wire into three 2" pieces and set aside.

STEP 2: Using one piece of wire make a simple loop, slide on one 5000 8mm Lt Col Topaz Shimmer bead and make a simple loop to close. Repeat once. Using the two Marrakesh links, link them together with the two beaded links (following the photo). And set aside.

STEP 3: Using one piece of wire make a simple loop, slide on one 5000 6mm Erinite Shimmer bead, one 5328 8mm Light Turquoise bead, and one 5000 6mm Erinite Shimmer, and make a simple loop to close. Using this link connect together the top of the Hamsa Hand link to the center hole in one side of the Marrakesh link made in Step 2.

STEP 4: Using one head pin slide on one 5000 4mm Lt Col Topaz Shimmer bead, one 5328 6mm Light Turquoise bead, and one 5000 4mm Lt Col Topaz Shimmer bead and make a simple loop. Repeat 2 more times. Taking these three components add them to the 1st, 3rd, and 5th holes in the bottom of the Hamsa Hand.

STEP 5: Using one head pin slide on one 5000 4mm Erinite Shimmer bead, one 5328 6mm Light Turquoise bead, and one 5000 4mm Erinite Shimmer bead and make a simple loop. Repeat 1 more time. Taking these two components add them to the 2nd and 4th holes in the bottom of the Hamsa Hand.

STEP 6: Using one head pin slide on one 5328 6mm Light Turquoise bead, and one 5000 6mm Lt Col Topaz Shimmer bead and make a simple loop. Repeat 1 more time. Taking these two components add them to the 2nd and 4th holes bottom of the Marrakesh link connecting to the Hamsa Hand.

STEP 7: Cut the beading wire into two 15" pieces. Using one piece of wire, slide on one crimp bead and crimp to the top 1st hole on the Marrakesh link. Add crimp covers. Create a pattern using half of the beads, slide them on to create a desired pattern. Then slide on one crimp bead and crimp to one end of the Temple Clasp. Add crimp cover. Repeat the pattern for the other side of the necklace.

SWAROVSKI

CREATE YOUR STYLE

Let It Bead



MARRAKESH MIRACLE EARRINGS



SWAROVSKI

CREATE YOUR STYLE

Let It Bead

MARRAKESH MIRACLE EARRINGS



Swarovski Crystals

Product Group	Article No.	Amount	Size	Color	Color Code
Beads	5000	12 pcs	4mm	Lt Col Topaz Shimmer	246 971
Beads	5000	10 pcs	4mm	Erinite Shimmer	246 971
Beads	5328	10 pcs	6mm	Light Turquoise	263

Supplies

- 2 Hamsa Hand Link – TierraCast® 94-3217-26
- 2 Add a Bead Ear wire – TierraCast® 90-3120-00
- 10 2" gold headpins

Instructions

STEP 1: Using one head pin slide on one 5000 4mm Lt Col Topaz Shimmer bead, one 5328 6mm Light Turquoise bead, and one 5000 4mm Lt Col Topaz Shimmer bead and make a simple loop. Repeat 2 more times. Taking these three components add them to the 1st, 3rd, and 5th holes in the bottom of the Hamsa Hand.

STEP 2: Using one head pin slide on one 5000 4mm Erinite Shimmer bead, one 5328 6mm Light Turquoise bead, and one 5000 4mm Erinite Shimmer bead and make a simple loop. Repeat 1 more time. Taking these two components add them to the 2nd and 4th holes in the bottom of the Hamsa Hand.

STEP 3: Using one earwire, slide on one 5000 4mm Erinite Shimmer bead and make a simple loop. Attach to the top hole in the Hamsa Hand link.

STEP 4: Repeat Steps 1 – 3 to make second earring.

SWAROVSKI

CREATE YOUR STYLE

Let It Bead



I HAVE MY EYE ON YOU



SWAROVSKI

CREATE YOUR STYLE

Let It Bead

I HAVE MY EYE ON YOU



Swarovski Crystals

Product Group	Article No.	Amount	Size	Color	Color Code
Beads	5000	6 pcs	6mm	Light Sapphire Shimmer	211 971
Beads	5000	10 pcs	8mm	Majestic Blue	296
Beads	5328	8 pcs	4mm	Light Sapphire Shimmer	211 971
Fancy Stone	4775	1 pc	10.5mmx18mm	Blue	MD291
Fancy Setting	4775/C	1 pc	10.5mmx18mm	Rhodium plate	2TC

Supplies

1 Evil Eye Charm – TierraCast® 94-2504-12
1 Small silver lobster clasp
1 4mm oval silver jump rings
4 2x2mm crimp beads silver
4 3x3mm crimp covers silver
12" Beadalon® silver 49 strand beading wire
Swarovski two-part epoxy CG500
Alcohol wipes

Instructions

STEP 1: Using the alcohol wipes to clean the finding and let sit to air dry.

STEP 2: Mix small amount of two-part epoxy and glue in the evil eye fancy stone and set aside to dry for 24 hours:

STEP 3: Cut beading wire into two 6" pieces

STEP 4: Using wire slide on one crimp bead and crimp to one end of the finding created in Step 2. Add crimp cover. Slide on beads to create desired pattern and then add crimp bead and lobster clasp and crimp to close. Add crimp cover. Repeat for other side and crimp to close with the oval jump ring.

STEP 5: Add on evil eye charm to oval jump ring.

SWAROVSKI

CREATE YOUR STYLE

Let It Bead



NAMASTE AT NIGHT



SWAROVSKI

CREATE YOUR STYLE

Let It Bead

NAMASTE AT NIGHT



Swarovski Crystals

Product Group	Article No.	Amount	Size	Color	Color Code
Beads	5000	16 pcs	6mm	Jet	280
Beads	5000	11 pcs	8mm	Jet	280
Beads	5328	16 pcs	6mm	Jet	280
Beads	5040	22 pcs	6mm	Jet	280
Beads	5328	50 pcs	4mm	Crystal Silver Night	001 SINI
Beads	5040	21 pcs	6mm	Crystal Silver Night	001 SINI
Beads	5040	16 pcs	8mm	Crystal Silver Night	001 SINI
Flatbacks	2205	1 pc	14mm	Crystal F	001

Supplies

- 1 Flame Charm – TierraCast® 94-2512-61
- 1 Om Charm – TierraCast® 94-2404-12
- 1 Buddha Charm – TierraCast® 94-2407-12
- 1 Lotus Charm – TierraCast® 94-2403-12
- 4 6mm oval silver jump rings
- 5 coils of Beadalon® Memory Wire silver
- Swarovski two-part epoxy CG500
- Alcohol wipes

Instructions

STEP 1: Using the alcohol wipes clean the Flame Charm and let sit to air dry.

STEP 2: Mix small amount of two-part epoxy and glue in the 14mm 2205 Flame Flatback stone and set aside to dry for 24 hours.

STEP 3: Taking one end of the memory wire and make a full turn with pliers to make a closed ring.

STEP 4: Using all the beads, slide them on to create a desired pattern. Trim the memory wire to 1" and make a full turn with pliers to make a closed ring.

STEP 5: Using one small jump ring attach the charms to each end of the bracelet.

SWAROVSKI

CREATE YOUR STYLE

Let It Bead



TEMPLE BIB OF BEAUTY



SWAROVSKI

CREATE YOUR STYLE

Let It Bead

TEMPLE BIB OF BEAUTY



Swarovski Crystals

Product Group	Article No.	Amount	Size	Color	Color Code
Beads	5328	65 pcs	4mm	Fuchsia	502
Beads	5000	13 pcs	8mm	Fuchsia	502
Beads	5328	26 pcs	6mm	Amethyst	204
Crystal Pearls	5810	39 pcs	6mm	Crystal Iridescent Purple	001 943

Supplies

- 1 Temple Clasp Set – TierraCast® 94-6231-12
- 18" Rolo Chain – TierraCast® 20-1025-12
- 13 2" ball headpins
- 13" 20 gauge silver Artistic Wire®
- 2 4mm oval silver jump rings
- 26 2x2mm crimp beads silver
- 26 3x3mm crimp covers silver
- 52" Beadalon® silver 49 strand beading wire

Instructions

STEP 1: Using one ball pin slide on one 5000 8mm Fuchsia bead and make a simple loop. Repeat 12 more times and set aside.

STEP 2: Cut 20 gauge wire into thirteen 1" pieces. Using one piece, make a simple loop at one end, slide on one 5328 4mm Fuchsia bead and make a simple loop to close. Repeat 12 more times and set aside.

STEP 3: Cut beading wire into thirteen 4" pieces. Using one piece of wire slide on one crimp bead and one beaded link made in Step 2, crimp to close. Attach crimp cover. Now slide on one 5810 6mm pearl, one 5328 4mm Fuchsia bead, one 5000 6mm Amethyst bead, one 5328 4mm Fuchsia bead, one 5810 6mm pearl, one 5328 4mm Fuchsia bead, one 5000 6mm Amethyst bead, one 5328 4mm Fuchsia bead, and one 5810 6mm pearl. Slide on one crimp bead and one beaded drop made in Step 1, crimp to close. Attach crimp cover. Repeat 12 more times and set aside.

STEP 4: Find the middle link of the Rolo chain. Using the beaded drops from Step 3 attach one in the middle loop. Then add six more to the right of the middle drop and six more to the left of the middle drop.

STEP 5: Using one jump ring attach one end of the Temple clasp to the end of the chain and then use the second jump ring to attach the other end of the Temple clasp to opposite end of the chain.

SWAROVSKI

CREATE YOUR STYLE

Let It Bead



TEMPLE DROP EARRINGS



SWAROVSKI

CREATE YOUR STYLE

Let It Bead

TEMPLE DROP EARRINGS



Swarovski Crystals

Product Group	Article No.	Amount	Size	Color	Color Code
Beads	5328	14 pcs	4mm	Fuchsia	502
Beads	5000	2 pcs	8mm	Fuchsia	502
Beads	5000	4 pcs	6mm	Amethyst	204
Crystal Pearls	5810	6 pcs	6mm	Crystal Iridescent Purple	001 943
Beads	5040	6 pcs	6mm	Amethyst	204

Supplies

- 2 Temple Rings – TierraCast® 94-3219-12
- 2 Add a Bead Ear Wires – TierraCast® 90-1160-00
- 6 2" ball headpins
- 12" 20 gauge silver Artistic Wire®

Instructions

- STEP 1:** Using one ball pin slide on one 5000 8mm Fuchsia bead and make a simple loop. Repeat 1 more time and set aside.
- STEP 2:** Using one ball pin slide on one 5810 6mm Pearl and make a simple loop. Repeat 3 more times and set aside.
- STEP 3:** Cut 20 gauge wire into six 2" pieces.
- STEP 4:** Using one piece of wire, make a simple loop at one end, slide on one 5328 4mm Fuchsia bead, one 5000 6mm Amethyst bead, and one 5328 4mm Fuchsia bead and make a simple loop to close. Add on one pearl drop made in Step 2. Repeat 3 more times and set aside.
- STEP 5:** Using one piece of wire, make a simple loop at one end, slide on one 5328 4mm Fuchsia bead, one 5810 6mm Pearl, and one 5328 4mm Fuchsia bead and make a simple loop to close. Add on one bead drop made in Step 1. Repeat 1 more time and set aside.
- STEP 6:** Using one ear wire, slide on one 5328 4mm Fuchsia bead and one 5040 6mm Amethyst bead, make a simple loop to close. Repeat 1 more time and set aside.
- STEP 7:** Using the Temple Ring add the ear wire made in Step 6 to large opening on the top. Then add the bead components from Step 5 to the center hole on the bottom. Then add the bead components from Step 4 to the left and right side holes.
- STEP 8:** Repeat Step 7 to make second earring.

SWAROVSKI

CREATE YOUR STYLE

Let It Bead

CELEBRATE YOUR FAMILY

Design birthstone, zodiac and/or family heirloom jewelry with Swarovski® crystals & TierraCast® charms. Great for Mother's Day, birthdays and family & friend gift-giving.



SWAROVSKI

CREATE YOUR STYLE

Let It Bead



BIRTHSTONE BRACELET



SWAROVSKI

CREATE YOUR STYLE

Let It Bead

BIRTHSTONE BRACELET



Swarovski Crystals

Product Group	Article No.	Amount	Size	Color	Color Code
Beads	5000	1 pc	8mm	Amethyst	204
Beads	5040	1 pc	8mm	Aquamarine	202
Beads	5328	1 pc	8mm	Peridot	214
Beads	5328	2 pcs	6mm	Crystal	001
BeCharmed	82103	1 pc	14mm	Montana, Crystal Moonlight	01, 207, 001 MOL

Instructions

STEP 1: Attach a jump ring to each of the Zodiac Charms.

STEP 2: Using one ball pin, slide on one 5040 8mm aquamarine bead and make a simple loop. Do the same for the Peridot and Amethyst beads and set aside.

STEP 3: Using one ball pin, slide on one 5328 6mm Crystal bead, one Best Mom BeCharmed bead, one 5328 6mm Crystal bead and make a simple loop.

STEP 4: Using all components made in Steps 1 – 3 arrange on bracelet in your own design.

Supplies

- 1 12 gauge Wire Bracelet – TierraCast® 01-0301-01
- 1 Pisces Charm – TierraCast® 94-2469-12
- 1 Leo Charm – TierraCast® 94-2474-12
- 1 Aquarius Charm – TierraCast® 94-2468-12
- 4 2" Ball pins
- 3 4mm round jump rings

SWAROVSKI

CREATE YOUR STYLE

Let It Bead



SAGITTARIUS SIMPLICITY



SWAROVSKI

CREATE YOUR STYLE

Let It Bead

SAGITTARIUS SIMPLICITY



Swarovski Crystals

Product Group	Article No.	Amount	Size	Color	Color Code
Beads	5000	9 pcs	6mm	Light Turquoise	263
Beads	5328	18 pcs	6mm	Blue Zircon	229

Supplies

- 1 Sagittarius Charm – TierraCast® 94-2478-12
- 6 Botanical Branch Link – TierraCast® 94-3221-12
- 2 Deco Rose 3-1 Links – TierraCast® 94-3053-12
- 1 medium silver lobster clasp
- 4 6mm oval silver jump rings
- 18" 20 gauge silver Artistic Wire®

Instructions

STEP 1: Cut Artistic wire into nine 2" pieces and set aside.

STEP 2: Using one piece of wire make a simple loop. Slide on one 5328 6mm Blue Zircon bead, one 5000 6mm Light Turquoise bead, and one 5328 6mm Blue Zircon bead. Make a simple loop to close. Repeat eight more times and set aside.

STEP 3: Using one Deco Rose Link and one beaded component made in Step 2 attach to the #1 loop on the link, then attach a Botanical Branch link to other side, attach another beaded component, then attach another Botanical Branch link and then attach a third beaded component. Finally attach to the #1 loop on the opposite Deco Rose link. Repeat this step for loops #2 and #3 on the Deco Rose link.

STEP 4: Using one jump ring attach the lobster clasp to one end of the Deco Rose link.

STEP 5: Using last 3 jump rings create a chain and attach one end to the end of the Deco Rose Link and the other end to the Sagittarius Charm.

SWAROVSKI

CREATE YOUR STYLE

Let It Bead

COLLEGE LIFE

You don't have to be a sorority girl to make and wear these **trendy bangle bracelets**.
Make multiple styles to wear together or stack with your other favorite bracelets!



SWAROVSKI

CREATE YOUR STYLE

Let It Bead



PHI, THE GOLDEN RATIO,
MEETS THE JET SET



SWAROVSKI

CREATE YOUR STYLE

Let It Bead

PHI, THE GOLDEN RATIO, MEETS THE JET SET



Swarovski Crystals

Product Group	Article No.	Amount	Size	Color	Color Code
Beads	5000	4 pcs	8mm	Jet	280
Beads	5000	1 pcs	8mm	Crystal Golden Shadow	001 GSHA
Beads	5000	2 pcs	6mm	Jet	280
Beads	5328	2 pc	6mm	Jet	280
Beads	5040	4 pc	8mm	Crystal Golden Shadow	001 GSHA

Supplies

Artistic Wire® Adjustable Oval Bangle Findings Form (228S-640),
18Ga German Style Gold Color Round Wire (180A-018) 1pc 11" and 2 pcs 3".
1 Phi Greek Alphabet Charm TierraCast® 94-2487-26
Round Nose Pliers (201E-003)
Flush Cutter (202S-001)

Instructions

STEP 1: Follow the Instructions on the Adjustable Oval Bangle Findings Form using the 11" piece of 18Ga wire but leave one of the ends without a loop (so you can get the beads on) also do not connect the loop until all beads and components have been added to the bracelet.

STEP 2: Use the 3" pieces of 18Ga German Style Round Gold Color wire to make the "drops". String one 5040 8mm crystal golden shadow bead, one 5328 6mm jet bead and one 5040 8mm crystal golden shadow bead onto the center of the wire, bend the sides of the wires at a 90 degree angle. Use the Round Nose Pliers to make a double loop on the end of each of the bent wires, making sure the loops are large enough to fit onto the Adjustable Bangle Bracelet. Make a second one of these.

STEP 3: String one 6mm 5000 jet bead onto the open end of the Adjustable Oval Bangle bracelet then one 8mm 5000 Crystal golden shadow bead, then one more 6mm 5000 jet bead. These beads should be pushed all the way around the bracelet and will be the 3 beads that will be between the two loops or the top of the bracelet.

STEP 4: String one 8mm 5000 jet bead onto the open end of the Adjustable Oval Bangle Bracelet followed by one of the components made in Step 2, then another 8mm 5000 jet bead, the Phi charm, another 8mm 5000 jet bead, the other component and a final 8mm 5000 jet bead.

STEP 5: Carefully bend the loop on one end of the Bracelet and connect it to the base wire of the bracelet (see Findings Forms Instructions).

STEP 6: Judge the length of the other end of the wire to and cut, then form a loop the same size as the one formed by the Findings Form, bend then attach to the wire making sure the first three beads strung on are captured in the moveable part of the adjustable bracelet between the two loops.

SWAROVSKI

CREATE YOUR STYLE

Let It Bead



GOLDEN POSEIDON



SWAROVSKI

CREATE YOUR STYLE

Let It Bead

GOLDEN POSEIDON



Swarovski Crystals

Product Group	Article No.	Amount	Size	Color	Color Code
Crystal Pearls	5810	3 pcs	8mm	Crystal Vintage Gold	001 651
Crystal Pearls	5810	4 pcs	6mm	Crystal Vintage Gold	001 651
Crystal Pearls	5810	4 pcs	4mm	Crystal Vintage Gold	001 651

Supplies

Beadalon® 3D Bracelet Jig (228S-550),
11" - 16Ga German Style Gold Color Round Wire (180A-016),
2pc 4" each 20Ga German Style Gold Color Round Wire (180A-020).
1 Psi Greek Alphabet Charm TierraCast® 94-2488-26
Round Nose Pliers (201E-003)
Flush Cutter (202S-001)
Wire Sizing Mandrels (228S-565)

Instructions

- STEP 1:** Use the 3D Bracelet Jig by placing a single peg in one hole on the first row of holes and secure it with the plastic holder.
- STEP 2:** Place the 16Ga Round Wire onto the 3D Bracelet Jig and wrap the end of the wire around the first peg, then wrap the wire completely around the circumference of the Jig passing the first peg and around the jig. Then resize on the larger of the two Sizing Mandrels, by placing the loop onto the peg and drawing the wire down onto the surface of the mandrel, this should make the bangle to about a medium bracelet size.
- STEP 3:** Use one of the pieces of 20Ga Wire and string on one 4mm, one 6mm, one 8mm, one 6mm, and one 4mm of the Crystal Pearls. Arrange these pearls into the center of the wire, bend the left wire at a right angle up, then bend the left wire down.
- STEP 4:** Use the other piece of 20Ga wire to string on one 4mm, one 6mm, one 8mm, Psi Charm, one 8mm, one 6mm and one 4mm crystal pearl. Bend both ends of the wire up then make a loop large enough to fit over the 16ga wire about 4mm away from the bend.
- STEP 5:** String the component made in step 4 onto the open end of the bangle bracelet, bend this component to match the curvature of the Bangle Bracelet curve.
- STEP 6:** Carefully bend the end of the 16Ga wire in a loop to match the loop made on the 3D Bracelet Jig.
- STEP 7:** Bend the loop so that it can be looped onto the wire, and do the same with the other end make sure the loops slide along the curved portion of the wire, for full adjustability
- STEP 8:** Carefully make a loop on the one side of the component made in step 3 and attach to one of the 16Ga wires in between the two loops, then make another loop and attach this to the other wire between the two loops. This component should move freely within the confines of the two loops in the adjustability area.

SWAROVSKI

CREATE YOUR STYLE

Let It Bead



SCARLET, PEARLS & PI



SWAROVSKI

CREATE YOUR STYLE

Let It Bead

SCARLET, PEARLS & PI



Swarovski Crystals

Product Group	Article No.	Amount	Size	Color	Color Code
Crystal Pearl	5810	2 pcs	4mm	Crystal Pearlescent White	001 969
Crystal Pearl	5810	2 pcs	6mm	Crystal Pearlescent White	001 969
Crystal Pearl	5810	2 pcs	8mm	Crystal Pearlescent White	001 969
Beads	5040	2 pcs	6mm	Scarlet	276

Supplies

Artistic Wire® Adjustable Oval Bangle Findings Form (228S-640),
18Ga German Style Gold Color Round Wire (180A-018) 1pc 11", 2 pcs 6",
20Ga German Style Gold Color Round Wire (180A-020) 1pc 5".
1 Pi Greek Alphabet Charm TierraCast® 94-2485-26
Round Nose Pliers (201E-003)
Flush Cutter (202S-001)

Instructions

STEP 1: Follow the Instructions on the Adjustable Oval Bangle Findings Form using the 18Ga German Style Round Wire but leave one of the ends without a loop (so you can get the beads on) also do not connect the loop until all beads and components have been added to the bracelet.

STEP 2: Use the piece of 20Ga wire to string on one 4mm, one 6mm, one 8mm crystal pearl, and one 5040 6mm Scarlet bead, one Pi Charm, one 5040 6mm Scarlet bead, then one 8mm, one 6mm and one 4mm crystal pearl. Bend both ends of the wire up then make a loop large enough to fit over the 18ga wire about 4mm away from the bend. Make two loops on the ends of the wires approximately 4mm above the bend making sure the loops are large enough to go over the 18Ga wire.

STEP 3: Open the Round Nose Pliers so that you can wrap one of the 6" pieces of wire around one of the round jaws of the pliers to create a coiled cone, stretch the cone to your desired length, then make the second one.

STEP 4: String on one of the cones made in step 3 then string on the component from step 2 and finally the other coil from step 3.

STEP 5: Cut the 18Ga wire to match the opposite side with the loop, then form a loop. Bend the loops so that they can be hooked onto the wire to make the adjustable Oval Bangle Bracelet.

SWAROVSKI

CREATE YOUR STYLE

Let It Bead



SILVER & GOLD SIGMA



SWAROVSKI

CREATE YOUR STYLE

Let It Bead

SILVER AND GOLD SIGMA



Swarovski Crystals

Product Group	Article No.	Amount	Size	Color	Color Code
Beads	5000	4 pcs	10mm	Crystal	001
Beads	5040	11 pcs	8mm	Crystal Golden Shadow	001 GSHA

Supplies

Artistic Wire® Adjustable Oval Bangle Findings Form (228S-640),
18Ga German Style 1/10 SilverFilled Half Hard Round Wire (18OSF-018HH) 1 pc 11", 1 pc 3".
1 Sigma Greek Alphabet Charm TierraCast® 94-2486-12
Round Nose Pliers (201E-003)
Flush Cutter (202S-001)

Instructions

STEP 1: Follow the Instructions on the Adjustable Oval Bangle Findings Form using the 18Ga German Style Wire but leave one of the ends without a loop (so you can get the beads on) also do not connect the loop until all beads and components have been added to the bracelet.

STEP 2: String on one 5000 10mm Crystal bead, three 5040 8mm Golden Shadow beads, one 5000 10mm Crystal bead, one 5040 8mm Golden Shadow bead, Sigma Charm, one 5040 8mm Golden Shadow bead, one 5000 10mm Crystal bead, three 5040 8mm Golden Shadow beads and one 5000 10mm Crystal bead.

STEP 3: Cut the 18Ga wire to match the opposite side with the loop, then form a loop. Bend the loops so that they can be hooked onto the wire to make the adjustable Oval Bangle Bracelet.

STEP 4: String on the remaining three 5040 8mm Golden Shadow beads to the short SilverFilled 18Ga round wire, then bend the wires at a 90 degree angle then angle one wire toward one of the two wires that bypass on the bracelet, angle the other wire to the other wire. Form loops with the Round Nose Pliers and attach one of these loops to one wire and the other loop to the other wire. Make sure this component moves freely on the two wires as they adjust the size of the bracelet.

SWAROVSKI

CREATE YOUR STYLE

Let It Bead



CRYSTAL GIRL



SWAROVSKI

CREATE YOUR STYLE

Let It Bead

CRYSTAL GIRL



Swarovski Crystals

Product Group	Article No.	Amount	Size	Color	Color Code
Beads	5000	4 pcs	10mm	Crystal	001
Beads	5040	4 pcs	6mm	Crystal	001
Crystal Pearl	5000	3 pcs	6mm	Crystal White	001 650
Beads	5328	2 pcs	6mm	Jet	280
Beads	280	1 pc	6mm	Jet	280
Beads	5328	1 pc	4mm	Crystal	001

Supplies

Artistic Wire® 3D Bracelet Jig (228S-550),
Artistic Wire® Sizing Drums (228S-565),
14" - 18Ga German Style 1/10 SilverFilled Half Hard Round Wire (180SF-018HH) 1pc 11", 1 pc 3".
1 Xi Greek Alphabet Charm TierraCast® 94-2484-12
Round Nose Pliers (201E-003)
Flush Cutter (202S-001)

Instructions

STEP 1: Place the 18Ga Round Wire onto the 3D Bracelet Jig and wrap the end of the wire around the first peg, then wrap the wire completely around the circumference of the Jig passing the first peg and around the jig. Then resize on the larger of the two Sizing Mandrels, by placing the loop onto the peg and drawing the wire down onto the surface of the mandrel, this should make the bangle to about a medium bracelet size.

STEP 2: String onto the open end of the wire one 10mm 5000 Crystal bead, one 6mm 5040 Crystal bead, one 10mm 5000 Crystal bead, one 6mm 5040 Crystal bead, Xi Charm, one 6mm 5040 Crystal bead, one 10mm 5000 Crystal bead, one 6mm 5040 Crystal bead and one 10mm 5000 Crystal bead.

STEP 3: Attach each of the remaining beads to the adjustability section of the Bangle Bracelet by wire wrapping them onto one or both of the adjustability wires.

STEP 4: Finish the bracelet by cutting the un-looped portion to about the same size as the looped one then form a loop then bend the loops so that they can be attached to the wire.

SWAROVSKI

CREATE YOUR STYLE

Let It Bead

OUT ON THE TOWN

Elegant, glamorous and sparkly! Sometimes all we need is the perfect pair of earrings!



SWAROVSKI

CREATE YOUR STYLE

Let It Bead



MIDNIGHT ELEGANCE

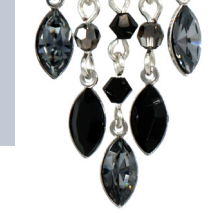
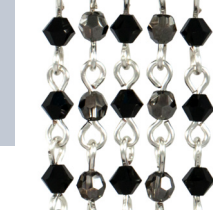
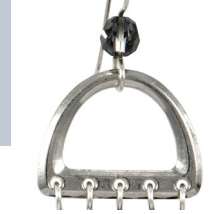


SWAROVSKI

CREATE YOUR STYLE

Let It Bead

MIDNIGHT ELEGANCE



Swarovski Crystals

Product Group	Article No.	Amount	Size	Color	Color Code
Beads	5000	2 pcs	6mm	Crystal Silver Night	001 SINI
Beads	5000	16 pcs	4mm	Crystal Silver Night	001 SINI
Beads	5328	22 pcs	4mm	Jet	280
Fancy Stone	4228	4 pcs	4mm	Jet	280
Fancy Stone	4228	6 pcs	6 pcs	Crystal Silver Night	001 SINI
Fancy Setting	4228/J	10 pcs	10 pcs	Rhodium plate	

Supplies

2 Add a Bead Ear Wires – TierraCast® 90-1150-00
2 Large 5 Hole D Rings – TierraCast® 94-6188-61
38" 20 gauge silver Artistic Wire®
Swarovski two-part epoxy CG500
Alcohol wipes

Instructions

STEP 1: Using the alcohol wipes to clean the findings and let sit to air dry.

STEP 2: Mix small amount of two-part epoxy and glue in the fancy stones to the fancy settings and set aside to dry for 24 hours.

STEP 3: Cut beading wire into thirty-eight 1" pieces.

STEP 4: Using one ear wire, slide on one 6mm bead and make a simple loop to close. Repeat 1 more time and set aside

STEP 5: Using one piece of wire make a simple loop, slide on one 4mm bead and make a simple loop to close. Repeat 37 more times and set aside.

STEP 6: Using one D Ring begin to create a pattern of your choice to create the chandelier earring and using the fancy stone settings for drops at the end. Add one ear wire made in Step 4 to the top of the D Ring.

STEP 7: Repeat Step 6 one more time for second earring.

SWAROVSKI

CREATE YOUR STYLE

Let It Bead



LITTLE DROPS OF GOLD



SWAROVSKI

CREATE YOUR STYLE

Let It Bead

LITTLE DROPS OF GOLD



Swarovski Crystals

Product Group	Article No.	Amount	Size	Color	Color Code
Beads	5040	2 pcs	6mm	Crystal Golden Shadow	001 GSHA
Beads	5040	6 pcs	8mm	Crystal Golden Shadow	001 GSHA
Fancy Stone	4120	2 pcs	14x10mm	Crystal Golden Shadow F	001 GSHA
Fancy Setting	4120/J	2 pcs	14x10mm	Gold Plate	

Supplies

2 Add a Bead Ear Wires – TierraCast® 90-3120-00
6" 20 gauge gold Artistic Wire®
Swarovski two-part epoxy CG500
Alcohol wipes

Instructions

STEP 1: Using the alcohol wipes to clean the findings and let sit to air dry.

STEP 2: Mix small amount of two-part epoxy and glue in the fancy stones to the fancy settings and set aside to dry for 24 hours.

STEP 3: Cut beading wire into six 1" pieces.

STEP 4: Using one piece of wire make a simple loop, slide on one 8mm 5040 Golden Shadow bead and make a simple loop to close. Repeat 5 more times and set aside.

STEP 5: Using one Add a Bead ear wire slide on one 6mm 5040 Golden Shadow bead and make a simple loop. Repeat one more time and set aside.

STEP 6: Using 3 bead components made in step 4 link together. At the top end of the chain add the earwire and at the bottom add the fancy stone.

STEP 7: Repeat Step 6 one more time for second earring.

SWAROVSKI

CREATE YOUR STYLE

Let It Bead



GOLDEN SCARLET
CRISS CROSS



SWAROVSKI

CREATE YOUR STYLE

Let It Bead

GOLDEN SCARLET CRISS CROSS



Swarovski Crystals

Product Group	Article No.	Amount	Size	Color	Color Code
Beads	5000	4 pcs	8mm	Scarlet	276
Beads	5040	8 pcs	6mm	Scarlet	276
Beads	5040	12 pcs	8mm	Crystal Golden Shadow	001 GSHA

Supplies

- 3 Criss Cross Link – TierraCast® 94-3208-25
- 1 Lotus magnetic clasp set – TierraCast® 94-6234-26
- 16" 20 gauge gold Artistic Wire®

Instructions

STEP 1: Cut the wire into the following pieces:

- four 1" pieces
- four 3" pieces

STEP 2: Using one 1" piece of wire, make a simple loop, slide on one 5040 8mm Crystal Golden Shadow and make a simple loop. Repeat three more times and set aside.

STEP 3: Using one piece of 3" wire make a simple loop, slide on one 5040 6mm Scarlet bead, one 5040 8mm Crystal Golden Shadow bead, one 5000 8mm Scarlet bead, one 5040 8mm Crystal Golden Shadow bead, and one 5040 6mm Scarlet bead and make a simple loop. Repeat 4 more times and set aside.

STEP 4: Using two components made in Step 2 attach to one end of the magnetic clasp. Then attach opposite end of components to either side of the Criss Cross link.

STEP 5: Using two components made in Step 3 attach each to the opposite sides of the Criss Cross link. Add other Criss Cross link to other ends of beaded components. Repeat this step for the last Criss Cross link.

STEP 6: Using two components made in Step 2 attach to the other end of the magnetic clasp. Then attach opposite end of components to either side of the Criss Cross link.

SWAROVSKI

CREATE YOUR STYLE

Let It Bead

For more inspiration & techniques visit: www.create-your-style.com